

2,700–3,700 lb. Torsion Axles

Typical Industries & Applications include:

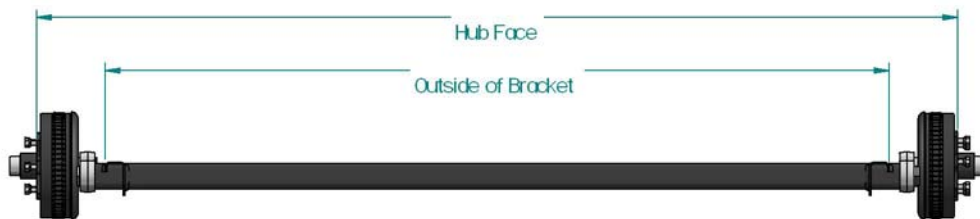
- Recreational Vehicle Trailers
- Enclosed Trailers
 - Cargo
 - Vehicle
 - Race Vehicle
- Open Utility Trailers
 - Landscape
 - Equipment
 - Sport Utility—motorcycle, quad and tri wheel units.
 - Construction
 - Construction Equipment
- Dump Trailer
- Marine
 - Boat
 - Personal watercraft
 - Pontoon Boat
- Agricultural Equipment
 - Feed & Grain
 - Spreaders
 - Transport
- Specialty Trailer
 - 1/2 Axles
 - Custom Application



Mounting and Dimensions

In order to minimize tire wear and axle performance issues Axis recommends that the following guidelines be followed when specifying axles within the 2,700 to 3,700 lb. The difference between hub face and outside of bracket dimensions.

Type	Flange	Minimum	Maximum
Straight Spindle	No Brake Flange	13"	23.625"
Straight Spindle	Flanged	13"	23.625"



OPTIONS:



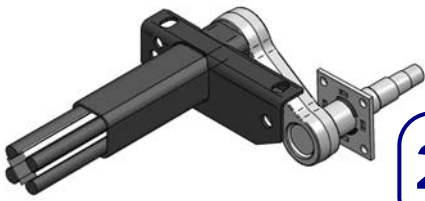
Drop Center Camber



Standard Camber

Available Finishes include:

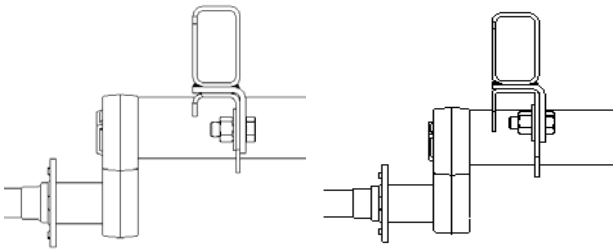
- Powder Coating
- Galvanized
- Wet Paint



2,700–3,700 lb. Torsion Axles

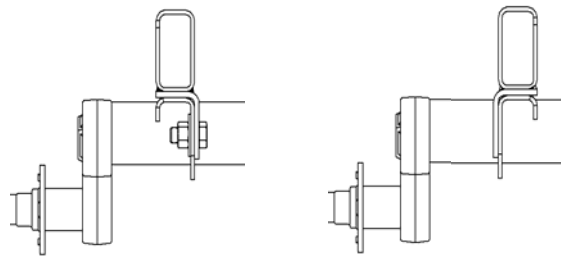
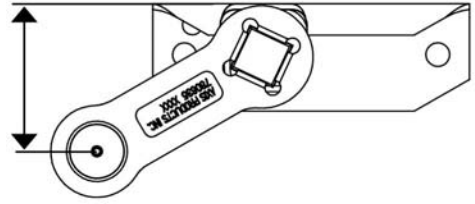
2,700–3,700 TA

Axis Trailer Products, Inc. • Phone 574.264.7955 • Fax 574.266.8333 • axistrailerproducts.com



Low-Profile (Standard)

High-Profile
(1" higher than Standard)



Inboard Mount

Outboard Mount

TORSION DYNAMIC DATA

(from bracket top to center of spindle)

Start Angle	Bracket Type	No Load	Full Load	Shock Load
45 Degree Down	Standard	6.01	4.06	3.06
	Hi-Profile	6.76	4.81	3.81
22.5 Degree Down	Standard	4.06	1.77	0.72
	Hi-Profile	4.81	2.52	1.47
10 Degree Down	Standard	2.81	0.47	-0.53
	Hi-Profile	3.56	1.22	0.22
0 Degree	Standard	1.77	-0.53	-1.46
	Hi-Profile	2.52	0.22	-0.71
10 Degree Up	Standard	0.72	-1.46	-2.29
	Hi-Profile	1.47	-0.71	-1.54
22.5 Degree Up	Standard	-0.53	-2.48	-3.15
	Hi-Profile	0.22	-1.73	-2.40

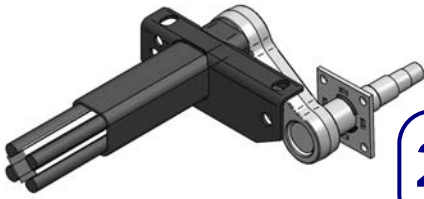
HUBS (All Parts (w/AP) Includes—Bearings, Seal, Dust Cap, Wheel Nuts & Grease)

AXIS P/N w/AP	Description	AXIS P/N w/AP	Description	AXIS P/N Race Only	Bolt Pattern
702331100000	H-545 Hub for Plain Spindle	702331200000	H-545 Hub for SAF-T-LUB Spindle	770412705510	5 on 4.5"
702332100000	H-5475 Hub for Plain Spindle	702332110000	H-5475 Hub for SAF-T-LUB Spindle	770412705512	5 on 4.75"
702332400000	H-550 Hub for Plain Spindle	702332410000	H-550 Hub for SAF-T-LUB Spindle	770412705511	5 on 5.0"
702332700000	H-555 Hub for Plain Spindle	702332710000	H-555 Hub for SAF-T-LUB Spindle	770412705513	5 on 5.5"
702333000000	H-655 Hub for Plain Spindle	702333100000	H-655 Hub for SAF-T-LUB Spindle	770412710610	6 on 5.5"
702336100000	HD-545 for Plain Spindle	702336200000	HD-545 for SAF-T-LUB Spindle	770412110510	5 on 4.5"
702337100000	HD-5475 for Plain Spindle	702337200000	HD-5475 for SAF-T-LUB Spindle	770412110512	5 on 4.75"
702337400000	HD-550 for Plain Spindle			770412110511	5 on 5.50"
702337700000	HD-555 for Plain Spindle			770412110513	5 on 5.50"
702337700000	HD-655 for Plain Spindle			770412110513	6 on 5.50"
702338600000	HD-700B for Plain Spindle (Hydraulic Only)			770412507510	5 on 4.5"

Contact Axis Product Service and Sales Department to Order



Quality Driven...
Customer Focused



2,700–3,700 lb. Torsion Axles

2,700–3,700 TA

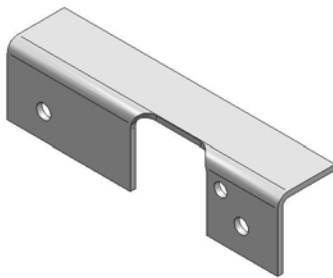
• Axis Trailer Products, Inc. • Elkhart, IN. • Phone 574.264.7955 • Fax 574.266.8333 • axistrailerproducts.com

BRAKES

AXIS P/N	Description
770512310300	10" Electric Brake Left Hand
770512410300	10" Electric Brake Right Hand
770512310320	10" Electric Brake w/Park Left Hand
770512410320	10" Electric Brake w/Park Right Hand
776513310300	10" Hydraulic Brake Left Hand
776513410300	10" Hydraulic Brake Right Hand
796513310320	10" Hydraulic Brake Free Backing Left Hand
796513410320	10" Hydraulic Brake Free Backing Right Hand
796513310360	10" Hydraulic Brake Free Backing w/Park Left Hand
796513410360	10" Hydraulic Brake Free Backing w/Park Right Hand
795513307210	7" DX Hydraulic Brake Left Hand
795513407210	7" DX Hydraulic Brake Right Hand
702338054500	10" Disc Brake w/ All Parts

HUB HARDWARE

AXIS P/N	Description
766251254800	DL-350 Double Lip Seal
764254446490	L44649 Outer Tapered Roller Bearing
770963120000	5-101 Tang Washer for SAF-T-LUB
786930200000	"O"--Washer for Standard Spindle for Use with Standard Spindle
786722016140	1-14 Slotted Jam Nut
786940000000	1/8" x 1-3/4" Cotter Pin for Use with Standard Spindle
786721408200	1/2" - 20 Cone Wheel Nut
770963130000	21-41-01 Grease Cap for Use with SAF-T-LUB Spindle
770963110000	85-1 Rubber Plug for SAF-T-LUB Grease Cap
770413247700	2" Press-In Stud for Idler Hubs
770413247800	2 1/2" Press-In Stud for Idler Hubs & Brake Drums
785452213000	Grease Cap 21-3 for Use with Standard Spindle
786930000000	"D" Washer for Use with SAF-T-LUB Spindle
764254681490	L68149 Inner Tapered Roller Bearing



Left Hand Side Mount Hanger

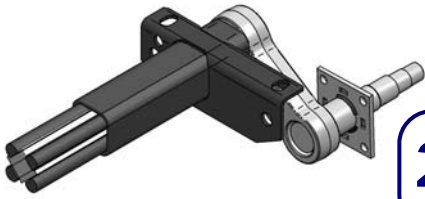
SIDE HANGER KIT

AXIS P/N	Description
787855101000	#35 Side Hanger Left Hand (1)
787855102000	#35 Side Hanger Right Hand (1)
750711910160	5/8" - 18 x 1.5" Bolt Zinc (4)
780721912181	5/8" - 18 Nut Zinc (4)
750730035800	5/8" Washer (4)

Contact Axis Product Service and Sales Department to Order



Quality Driven...
Customer Focused



2,700–3,700 lb. Torsion Axles

2,700–3,700 TA

WHEEL & TIRE ASSEMBLIES

AXIS P/N	DESCRIPTION	WHEEL DIA.	TYPE	LOAD RANGE	SLR	PSI	MAX LOAD CAP. (LBS)
751050440644	ST175/80 D13 5 on 4.5"	13"	Bias	C	11.2	50	1360
751050470007	ST205/75 R14 5 on 4.5"	14"	Radial	C	12.1	50	1760
751050453620	ST215/75–14 5 on 4.5"	14"		C	12.4	50	1870
751050473007	ST205/75 R15 5 on 4.5"	15"	Radial	C	12.6	50	1820
751050474007	ST225/75 R15 5 on 4.5"	15"	Radial	C	13	50	2150

Axis Trailer Products, Inc. • Elkhart, IN. • Phone 574.264.7955 • Fax 574.266.8333 • axis trailerproducts.com



Quality Driven...
Customer Focused