

4,000–6,000 lb. Torsion Axles

Typical Industries & Applications include:

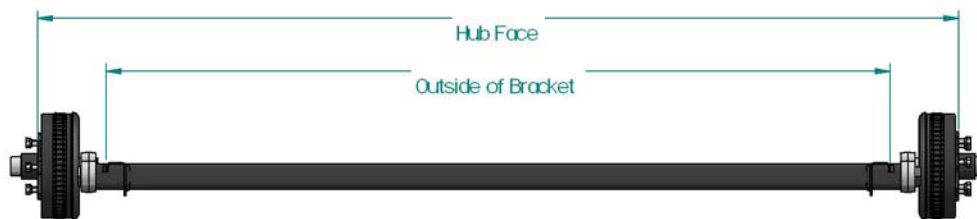
- Recreational Vehicle Trailers
- Enclosed Trailers
 - Cargo
 - Vehicle
 - Race Vehicle (Stacker)
- Open Utility Trailers
 - Landscape
 - Equipment
 - Construction
 - Construction Equipment
- Dump Trailers
- Marine
 - Boat
 - Personal watercraft
 - Pontoon Boat
- Agricultural Equipment
 - Feed & Grain
 - Spreaders
 - Transport
- Specialty Trailer
 - 1/2 Axles
 - Custom Application



Mounting and Dimensions

In order to minimize tire wear and axle performance issues Axis recommends that the following guidelines be followed when specifying axles within the 4,000 to 6,000 lb. The difference between hub face and outside of bracket dimensions.

Type	Flange	Minimum	Maximum
Straight Spindle	No Brake Flange	15"	23.625"
Straight Spindle	Flanged	15"	23.625"



OPTIONS:



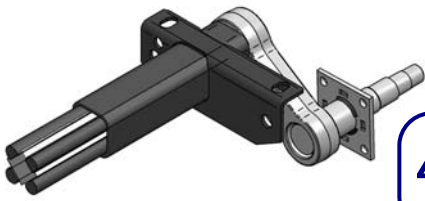
Drop Center Camber



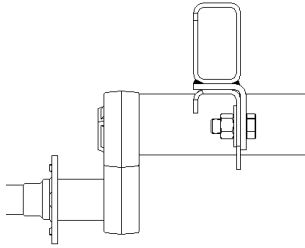
Standard Camber

Available Finishes include:

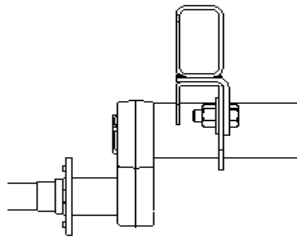
- Powder Coating
- Galvanized
- Wet Paint



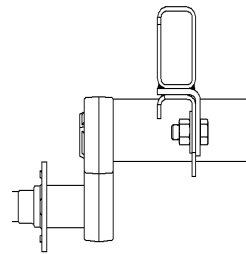
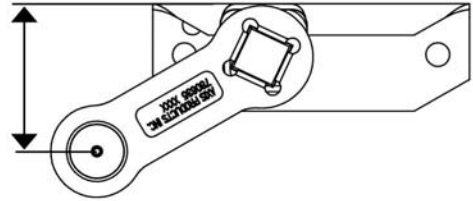
4,000–6,000 lb. Torsion Axles



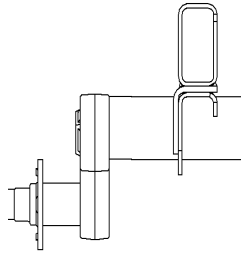
Low-Profile (Standard)



High-Profile
(1" higher than Standard)



Inboard Mount



Outboard Mount

TORSION DYNAMIC DATA

(from bracket top to center of spindle)

Start Angle	Bracket Type	No Load	Full Load	Shock Load
45 Degree Down	Standard	6.01	4.06	3.06
	Hi-Profile	6.76	4.81	3.81
22.5 Degree Down	Standard	4.06	1.77	0.72
	Hi-Profile	4.81	2.52	1.47
10 Degree Down	Standard	2.81	0.47	-0.53
	Hi-Profile	3.56	1.22	0.22
0 Degree	Standard	1.77	-0.53	-1.46
	Hi-Profile	2.52	0.22	-0.71
10 Degree Up	Standard	0.72	-1.46	-2.29
	Hi-Profile	1.47	-0.71	-1.54
22.5 Degree Up	Standard	-0.53	-2.48	-3.15
	Hi-Profile	0.22	-1.73	-2.40

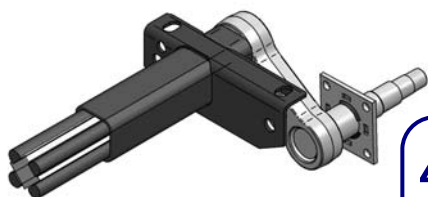
HUBS (All Parts (w/AP) Includes—Bearings, Seal, Dust Cap, Wheel Nuts & Grease)

AXIS P/N w/AP	AXIS P/N Race Only	Description	Bolt Pattern
702361110000	770412712610	H-1206 Hub for SAF-T-LUB Spindle	6 on 5.5"
702366100000	770412112610	HD-1206 Drum for Plain Spindle	6 on 5.5"
702366200000	770412112610	HD-1206 Drum for SAF-T-LUB Spindle	6 on 5.5"
702362100000	770412712810	H-1208 Hub for Plain Spindle	8 on 6.5"
702362200000	770412712810	H-1208 Hub for SAF-T-LUB Spindle	8 on 6.5"
	770412719160	H-1208 Hub w/ 9/16" Studs	8 on 6.5"
702367100000	770412112810	HD-1208 Drum for Plain Spindle	8 on 6.5"
702367200000	770412112810	HD-1208 Drum for SAF-T-LUB Spindle	8 on 6.5"
	770412119160	HD-1208 Drum w/9/16" Studs	8 on 6.5"
770412212510	770412212500	HD-HCS Drum Demountable	8 on 6.5"

Contact Axis Product Service and Sales Department to Order



Quality Driven...
Customer Focused



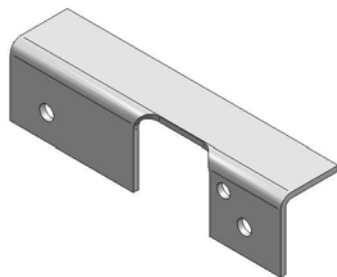
4,000–6,000 lb. Torsion Axles

BRAKES

AXIS P/N	Description
770512312200	12" Electric Brake Left Hand
770512412200	12" Electric Brake Right Hand
770512312220	12" Electric Brake Left Hand w/ Park
770512412220	12" Electric Brake Right Hand w/ Park
796514312200	12" Hydraulic Brake Left Hand
796514412200	12" Hydraulic Brake Right Hand
796514312212	12" Hydraulic Brake Left Hand Fee-Backing
796514412212	12" Hydraulic Brake Right Hand Free-Backing
796514312214	12" Hydraulic Brake Left Hand Fee-Backing w/ Park
796514412214	12" Hydraulic Brake Right Hand Fee-Backing w/ Park
702366500000	12" Disc Brake w/ All Parts
702366510000	13" Disc Brake w/ All Parts

HUB HARDWARE

AXIS P/N	Description
770413247800	1/2-20 2.5" Press-in Stud
770413247590	1/2-20 2.0" Press-in Stud
770963140000	21-42-01 Grease Cap for Use with H-1206 or HD-1206 SAF-T-LUB Spindle
770963150000	21-43-01 Grease Cap for Use with H-1208 or HD-1208 SAF-T-LUB Spindle
770963110000	85-1 Rubber Plug for SAF-T-LUB Grease Cap
785452211000	21-1 Grease Cap for Use with H-1206 or HD-1206 Plain Spindle
778452921100	21-39 Grease Cap for Use with H-1208 or HD-1208 Plain Spindle
766251101500	DL-600 Double Lip Seal for 2-1/8" Spindle Shaft
766251701036	DL-700 Double Lip Seal for 2-1/4" Spindle Shaft
770963120000	5-101 Tang Washer for SAF-T-LUB
786722016140	1-14 Slotted Jam Nut
786930000000	"D" Washer for SAF-T-LUB Spindle
786930200000	"O" Washer for Standard Spindle
786940000000	1/8 X 1-3/4 Cotter Pin
764254255800	25580 Inner Tapered Roller Bearing
764254151230	15123 Outer Tapered Roller Bearing use with 1206 & HCS
764254141250	14125A Outer Tapered Roller Bearing



Left Hand Side Mount Hanger

SIDE HANGER KITS

AXIS P/N	Description
787855111000	#52-Left Hand Side Mount Hanger (1)
787855112000	#52-Right Hand Side Mount Hanger (1)
750711910160	5/8-18x1.5" HCS G5 Bolt-Zinc (4)
750721912181	5/8-18 FHN T-LOC Nut Zinc (4)
750730035800	5/8 Flat Washer - Zinc (4)

Contact Axis Product Service and Sales Department to Order



Quality Driven...
Customer Focused



4,000–6,000 lb. Torsion Axles

4,000–6,000 TA

Axis Trailer Products, Inc. • Elkhart, IN. • Phone 574.264.7955 • Fax 574.266.8333

WHEEL & TIRE ASSEMBLIES

AXIS P/N	DESCRIPTION	WHEEL DIA.	TYPE	LOAD RANGE	SLR	PSI	MAX LOAD CAP. (LBS)
751050431607	LT235/85 R-16 8 on 6.5" White Spoke	16"	Radial	E	14.3"	80	3042
751050456750	LT225/75 R-15 6 on 5.5" White Mod	15"	Radial	D	13.5"	65	2335
751050495001	LT225-75 R-15 6 on 5.5" White Spoke	15"	Radial	D	13.5"	65	2335
751050495004	ST205/75 R-15 6 on 5.5" White Spoke	15"	Radial	C	12.6"	50	1820
751060244220	9.00-14.5 LT F T700	14.5"	Bias	F	13.3"	100	3230

↳ Contact Axis Product Service and Sales Department to Order



Quality Driven...
Customer Focused