

500—2,200 lb. Torsion Axles

Typical Industries & Applications include:

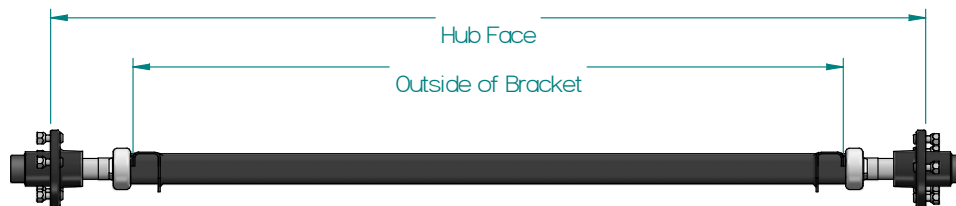
- Enclosed Trailers
 - Cargo
 - Motorcycle cargo
- Open Utility Trailers
 - Landscape
 - Equipment
 - Sport Utility—motorcycle, quad and tri wheel units.
 - Construction
- Marine
 - Boat
 - Personal watercraft
- Specialty Trailers
 - 1/2 Axles
 - Airport Cargo
 - Custom application



Mounting and Dimensions

In order to minimize tire wear and axle performance issues Axis recommends that the following guidelines be followed when specifying axles within the 500 to 2,200 lb. The difference between hub face and outside of bracket dimensions.

Type	Flange	Minimum	Maximum
Straight Spindle	No Brake Flange	13"	21.750"
Straight Spindle	Flanged	13"	21.750"



OPTIONS:



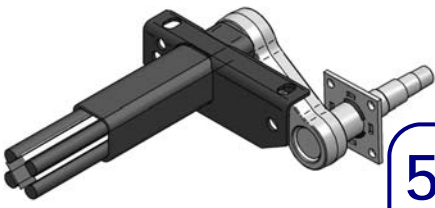
Drop Center Camber



Standard Camber

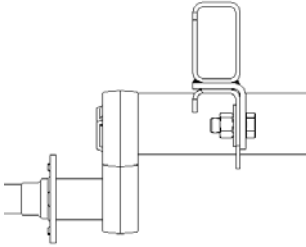
Available Finishes include:

- Powder Coating
- Galvanized
- Wet Paint

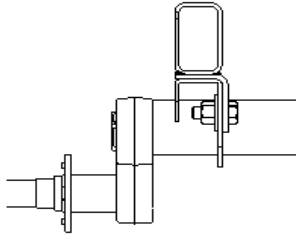


500—2,200 lb. Torsion Axles

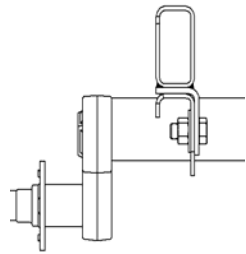
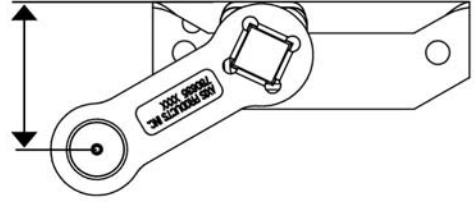
Axis Trailer Products, Inc. • Elkhart, IN. • Phone 574.264.7955 • Fax 574.266.8333 • axistrailerproducts.com



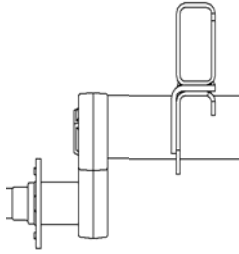
Low-Profile (Standard)



High-Profile
(1" higher than Standard)



Inboard Mount



Outboard Mount

TORSION DYNAMIC DATA

(from bracket top to center of spindle)

Start Angle	Bracket Type	No Load	Full Load	Shock Load
45 Degree Down	Standard	5.46	3.52	2.52
	Hi-Profile	6.33	4.38	3.38
22.5 Degree Down	Standard	3.52	1.22	0.18
	Hi-Profile	4.38	2.09	1.04
10 Degree Down	Standard	2.26	-0.08	-1.08
	Hi-Profile	3.13	0.79	-0.21
0 Degree	Standard	1.22	-1.08	-2.00
	Hi-Profile	2.09	-0.21	-1.14
10 Degree Up	Standard	0.18	-2.00	-2.83
	Hi-Profile	1.04	-1.14	-1.97
22.5 Degree Up	Standard	-1.08	-3.02	-3.70
	Hi-Profile	-0.21	-2.16	-2.83

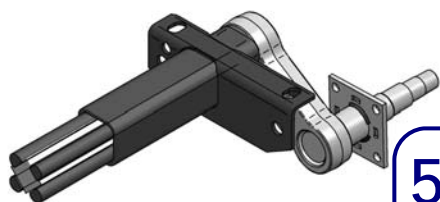
HUBS (All Parts (w/AP) Includes—Bearings, Seal, Dust Cap, Wheel Nuts & Grease)

AXIS P/N w/AP	AXIS P/N Race Only	Bolt Pattern	Description
70232050000	770412804412	4 on 4	H-100-S
70232220000	770412705509	5 on 4-1/2	H-150-S Small Flange
70232350000	770412805512	5 on 4-1/2	H-151-S Large Flange
70232520000	771412507410	4 on 4	HD-700-A 7" Drum for Hydraulic Brake
70232620000	771412505510	5 on 4-1/2	HD-700-C 7" Drum for Hydraulic Brake
70232720000	770412207410	4 on 4	HD-DX7-4 7" Drum for Electric Brake
70232780000	770412207510	5 on 4-1/2	HD-DX7-5 7" Drum for Electric Brake

Contact Axis Product Service and Sales Department to Order

Quality Driven...
Customer Focused





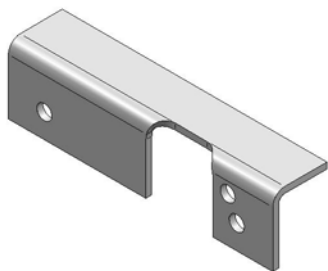
500—2,200 lb. Torsion Axles

BRAKES

AXIS P/N	Description
770512307200	7" Electric Brake Left Hand
770512407200	7" Electric Brake Right Hand
770512307500	7" Electric Brake w/ Park Left Hand
770512407500	7" Electric Brake w/ Park Right Hand
795513307210	7" Hydraulic Brake Left Hand
795513407210	7" Hydraulic Brake Right Hand

HUB HARDWARE

AXIS P/N	Description
766251467590	DL-200 Double-Lip Seal for 1" Spindle
766251226700	DL-220 Double-Lip Seal for 1-1/16" Spindle
764254446490	L-44649 Bearing for 1-1/16" Spindle
764254446430	L-44643 Bearing for 1" Spindle
770413247600	Press in Stud for Idler Hub / 1/2"-20
770991100000	Screw-in Stud / 1/2"-20
785452213000	21-3 Grease Cap for Plain Spindle
770963130000	21-41 Grease Cap for Saf-T-Lube Spindle
786721408200	1/2"-20 Cone Wheel Nut
770963110000	85-1 Rubber Plug for Saf-T-Lube Grease Cap
770963120000	5-101 Tang Washer for SAF-T-LUB
786930200000	"O"--Washer for Standard Spindle for Use with Standard Spindle
786722016140	1-14 Slotted Jam Nut
786940000000	1/8" x 1-3/4" Cotter Pin for Use with Standard Spindle
786930000000	"D" Washer for Use with SAF-T-LUB Spindle



Left Hand Side Mount Hanger

SIDE HANGER KITS

AXIS P/N	Description
787855091000	# 22 Left Hand Hanger (1)
787855092000	# 22 Right Hand Hanger (1)
750711910160	5/8-18 x 1.5" Bolt (4)
750721912181	5/8-18 Lock Nut (4)
750730035800	5/8-Flat Washer (4)

WHEEL & TIRE ASSEMBLIES

AXIS P/N	DESCRIPTION	WHEEL DIA.	TYPE	LOAD RANGE	SLR	PSI	MAX LOAD CAP. (LBS)
751060364204	4 on 4" White Wheel	4.80-8	Bias	B	7.9	60	590
751060552204	5 on 4.5" White Wheel	5.70-8	Bias	B	8.7	50	715
75106725204	4 on 4" White Mods	4.80-8	Bias	B	7.9	60	590
75106725205	5 on 4.5" White Mods	4.80-8	Bias	B	7.9	60	590
751050028307	4 on 4" White Spoke	4.80 x 12	Bias	B	9.5	60	780
751050030307	4 on 4" White Spoke	4.80 x 12	Bias	C	9.5	90	990
751050031307	5 on 4.5" White Spoke	4.80 x 12	Bias	C	9.5	90	990
751050034307	4 on 4" White Spoke	5.30 x 12	Bias	B	10.2	55	840
751050035307	5 on 4.5" White Spoke	5.30 x 12	Bias	C	10.2	80	1045

Contact Axis Product Service and Sales Department to Order



Quality Driven...
Customer Focused