

6,100–7,000 lb. Torsion Axles

Typical Industries & Applications include:

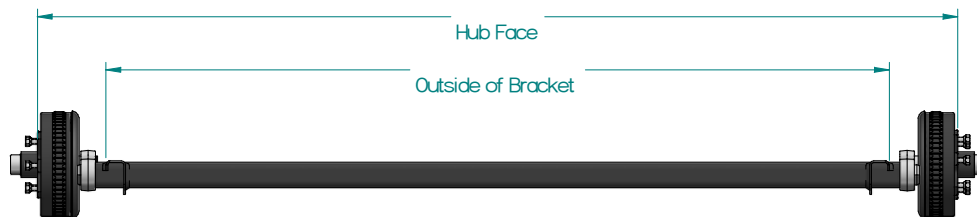
- Recreational Vehicle Trailers
- Enclosed Trailers
 - Cargo
 - Vehicle
 - Race Vehicle (Stacker)
- Open Utility Trailers
 - Landscape
 - Equipment
 - Construction
 - Construction Equipment
- Dump Trailers
- Marine
 - Boat
 - Personal watercraft
 - Pontoon Boat
- Agricultural Equipment
 - Feed & Grain
 - Spreaders
 - Transport
- Specialty Trailer
 - 1/2 Axles
 - Custom Application



Mounting and Dimensions

In order to minimize tire wear and axle performance issues Axis recommends that the following guidelines be followed when specifying axles within the 6,100 to 7,000 lb. The difference between hub face and outside of bracket dimensions.

Type	Flange	Minimum	Maximum
Straight Spindle	No Brake Flange	15"	30.625"
Straight Spindle	Flanged	15"	30.625"



OPTIONS:



Drop Center Camber



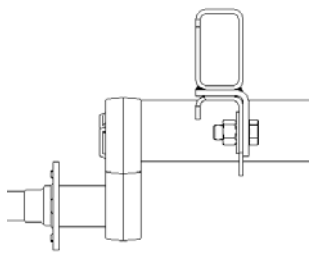
Standard Camber

Available Finishes include:

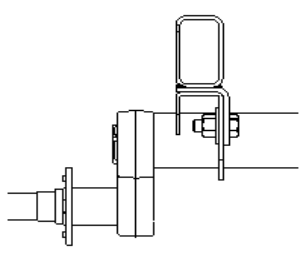
- Powder Coating
- Galvanized
- Wet Paint



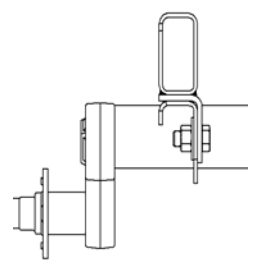
6,100–7,000 lb. Torsion Axles



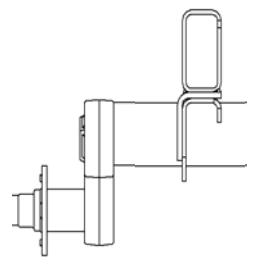
Low-Profile (Standard)



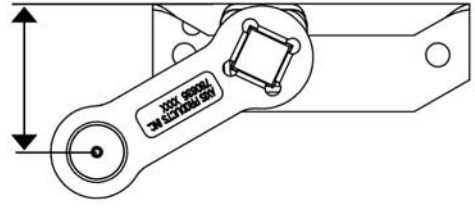
High-Profile
(1" higher than Standard)



Inboard Mount



Outboard Mount



TORSION DYNAMIC DATA (from bracket top to center of spindle)

Start Angle	Bracket Type	No Load	Full Load	Shock Load
45 Degree Down	Standard	6.24	4.30	3.30
	Hi-Profile	6.99	5.05	4.05
22.5 Degree Down	Standard	4.30	2.00	0.96
	Hi-Profile	5.05	2.75	1.71
10 Degree Down	Standard	3.04	0.70	-0.30
	Hi-Profile	3.79	1.45	0.45
0 Degree	Standard	2.00	-0.30	-1.22
	Hi-Profile	2.75	0.45	-0.47
10 Degree Up	Standard	0.96	-1.22	-2.05
	Hi-Profile	1.71	-0.47	-1.30
22.5 Degree Up	Standard	-0.30	-2.24	-2.91
	Hi-Profile	0.45	-1.49	-2.16

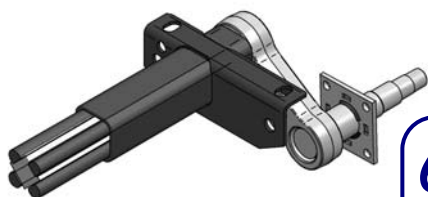
HUBS (All Parts (w/AP) Includes—Bearings, Seal, Dust Cap, Wheel Nuts & Grease)

AXIS P/N w/AP	AXIS P/N Race Only	Bolt Pattern	Description
702361100000	770412712610	6 on 5-1/2"	H-1206 Hub for Plain Spindle
702361110000	770412712610	6 on 5-1/2"	H-1206 Hub for SAFE-T-LUBE Spindle
702362100000	770412712810	8 on 6-1/2"	H-1208 Hub for Plain Spindle
702362200000	770412712810	8 on 6-1/2"	H-1208 Hub for SAFE-T-LUBE Spindle
702366100000	770412712610	6 on 5-1/2"	HD-1206 Drum for Plain Spindle
702366200000	770412112610	6 on 5-1/2"	HD-1206 Drum for SAFE-T-LUBE Spindle
702367100000	77041211810	8 on 6-1/2"	HD-1208 Drum for Plain Spindle
702367220000	770412112810	8 on 6-1/2"	HD-1208 Drum for SAFE-T-LUBE Spindle
702366510000	770412908653	8 on 6-1/2"	13" Integral Hub & Rotor for Disc Brake

Contact Axis Product Service and Sales Department to Order



Quality Driven...
Customer Focused



6,100–7,000 lb. Torsion Axles

BRAKES

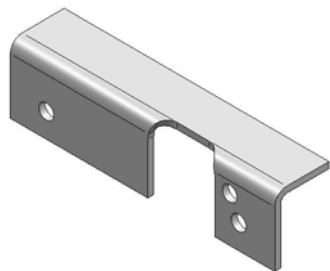
AXIS P/N	Description
796514312200	12" Hydraulic Brake Left Hand
796514412200	12" Hydraulic Brake Right Hand
796514312210	12" Hydraulic Brake w/ Park Left Hand
796514412210	12" Hydraulic Brake w/ Park Right Hand
796514312212	12" Hydraulic Brake/ Free Backing Left Hand
796514412212	12" Hydraulic Brake/ Free Backing Right Hand
770512312200	12" Electric Brake Left Hand
770512412200	12" Electric Brake Right Hand
796713410700	13" E-Coated Disc Brake Set (includes all attaching components)
796713410075	13" SCAD Disc Brake Set (includes all attaching components)

HUB HARDWARE

AXIS P/N	Description
766251101500	DL-600 Double Lip Seal for 2-1/8" Spindle Shaft
766251701036	DL-700 Double Lip Seal for 2-1/4" Spindle Shaft
764254141250	14125A Outer Taper Roller Bearing for 1-1/4" Spindle
764254255800	25580 Inner Taper Roller Bearing for 1-1/4" Spindle
770413247590	2" Press-In Stud for Idler Hubs Only
770413247800	2-1/2" Press-In Stud for Idler Hubs & Brake Drums
785452211000	21-1 Grease Cap—Fits 6 Lug Hub/Drum for Use With Plain Spindle
785452213900	21-39 Grease Cap—Fits 8 Lug Hub/Drum for Use With Plain Spindle
770963140000	21-42-01 Grease Cap—Fits 6 Lug Hub/Drum for Use with SAFE-T-LUBE Spindles
770963150000	21-43-01 Grease Cap—Fits 8 Lug Hub/Drum for Use with SAFE-T-LUBE Spindles
770963110000	85-1 Rubber Plug for SAFE-T-LUBE Grease Caps
786721408200	1/2-20 Cone Wheel Nut
770413247700	Press-In Stud for 12" Rotor
770413247750	Press-In Stud for 13" Rotor
770963120000	5-101 Tang Washer for SAF-T-LUB
786930200000	"O"--Washer for Standard Spindle for Use with Standard Spindle
786722016140	1-14 Slotted Jam Nut
786940000000	1/8" x 1-3/4" Cotter Pin for Use with Standard Spindle
786930000000	"D" Washer for Use with SAF-T-LUB Spindle

SIDE HANGER KITS

AXIS P/N	Description
787855121000	#70 Left Hand Side Mount Hanger (1)
787855122000	#70 Right Hand Side Mount Hanger (1)
750711910160	5/8"—18 x 1.5 HCS Zinc Bolt (4)
750721912181	5/8"—18 FH Zinc T-Lock Nut (4)
750730035800	5/8" Zinc Flat Washer (4)



Left Hand Side Mount Hanger

↳ Contact Axis Product Service and Sales Department to Order



**Quality Driven...
Customer Focused**



6,100–7,000 lb. Torsion Axles

WHEEL & TIRE ASSEMBLIES

AXIS P/N	DESCRIPTION	WHEEL DIA.	TYPE	LOAD RANGE	SLR	PSI	MAX LOAD CAP. (LBS)
751050420000	ST235/85 R16 6 on 5.5 White Spoke	16"	Radial	E	14.3"	90	3042
751050431607	ST235/85 R16 8 on 6.5 White Spoke	16"	Radial	E	14.3"	90	3042
751050431608	ST235/80 R16 8 on 6.5 White Spoke	16"	Radial	D	14.0"	65	3000
751050431609	ST235/80 R16 8 on 6.5 Silver Mod	16"	Radial	D	14.0"	65	3000
751050431610	LT235/85 R16 8 on 6.5 White Spoke	16"	Radial	D	14.3"	65	2623
751050431620	LT235/85 R16 8 on 6.5 Silver Mod	16"	Radial	D	14.3"	65	2623
751050431630	LT235/85 R16 8 on 6.5 White Mod	16"	Radial	D	14.3"	65	2623

6,100–7,000 TA

↳ Contact Axis Product Service and Sales Department to Order



Quality Driven...
Customer Focused