

700-2,200 lb. Spring Axles

Typical Industries & Applications include:

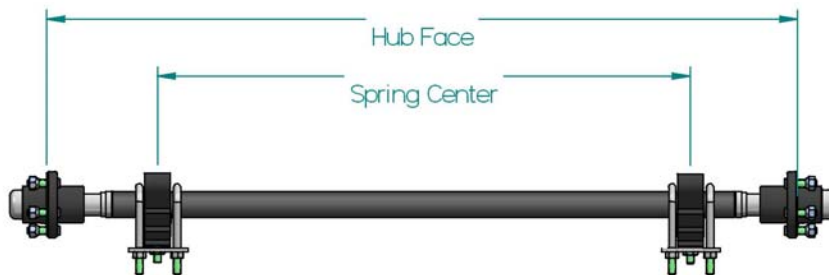
- Marine Trailers
 - Personal Water Craft
 - Boat
- Open Utility Trailers
 - Landscape
 - Sport Utility—motorcycle, quad and tri wheel units



Mounting and Dimensions

In order to minimize tire wear and axle performance issues Axis recommends that the following guidelines be followed when specifying axles within the 700 to 2,200 lb. The difference between hub face and spring center based on spindle and brake flange.

| Type | Flange | Minimum | Maximum |
|------------------|-----------------|---------|---------|
| Straight Spindle | No Brake Flange | 10.00" | 16" |
| Straight Spindle | Flanged | 12.00" | 16" |
| 4" Drop Spindle | Flanged | 15.00" | 18" |



OPTIONS:



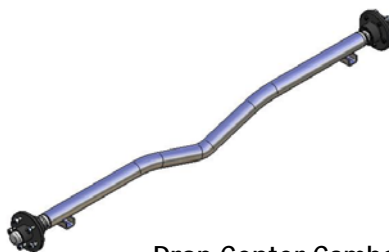
Spring Axle Under Slung



Spring Axle Over Slung



4" Drop Spindle



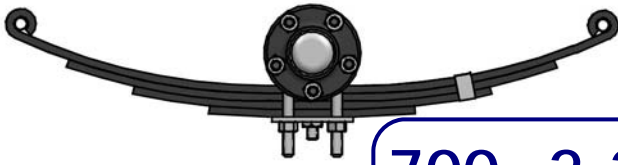
Drop Center Camber



Standard Camber

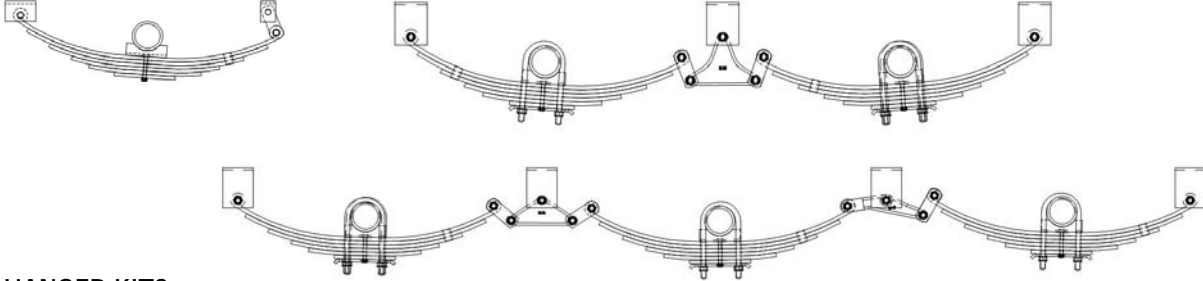
Available Finishes include:

- Powder Coating
- Galvanized
- Wet Paint



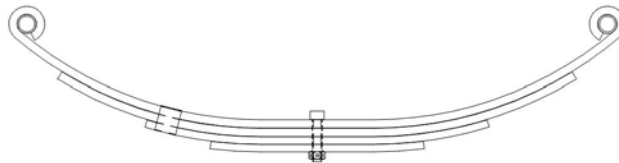
700-2,200 lb. Spring Axles

DOUBLE EYE SPRING AXLE CONFIGURATIONS



HANGER KITS

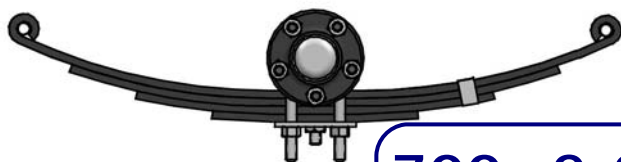
| CONFIGURATION | AXIS P/N | AXIS P/N ZINC PLATED | AXLE SPACING (STANDARD 33") | DESCRIPTION (CONTENTS) |
|---------------|------------|-------------------------|-------------------------------------------------|-------------------------------------------------------------------------------------------------------------|
| SINGLE KITS | 7024006000 | 7024056000 | 25 3/4" Hanger Spacing | 4 pcs. 18-12 Link, 2 pcs. 28-6 Hanger, 2 pcs. 93003 Hanger, 6 pcs. 3" Shackle Bolt, 6 pcs. Lock Nut |
| | 7024004000 | 7024054000 | 25 3/4" Hanger Spacing | 4 pcs. 18-12 Link, 2 pcs. 28-5 Hanger, 2 pcs. 93003 Hanger, 6 pcs. 3" Shackle Bolt, 6 pcs. Lock Nut |
| TANDEM KITS | 7024023000 | 7024073000 | 29-1/2" Hanger Spacing | 8 pcs. 18-11 Link, 2 pcs. 13-10 Equalizer, 6 pcs. 28-6 Hanger, 14 pcs. 3" Shackle Bolt, 14 pcs. Lock Nut |
| | 7024025000 | 7024075000 | 29-1/2" Hanger Spacing | 8 pcs. 18-11 Link, 2 pcs. 13-10 Equalizer, 6 pcs. 28-5 Hanger, 14 pcs. 3" Shackle Bolt, 14 pcs. Lock Nut |
| | 7024026000 | 7024076000 | 29-1/2" Hanger Spacing | 8 pcs. 18-11.5 Link, 2 pcs. 13-10 Equalizer, 6 pcs. 28-5 Hanger, 14 pcs. 3" Shackle Bolt, 14 pcs. Lock Nut |
| TRIPLE KITS | 7024033000 | 7024083000 | Front/Rear Hanger 29-1/2", Center Hanger 33" | 16 pcs. 18-11 Link, 4 pcs. 13-10 Equalizer, 8 pcs. 28-6 Hanger, 24 pcs. 3" Shackle Bolt, 24 pcs. Lock Nut |
| | 7024035000 | 7024085000 | Front/Rear Hanger 29-1/2", Center Hanger 33" | 16 pcs. 18-11 Link, 4 pcs. 13-10 Equalizer, 8 pcs. 28-5 Hanger, 24 pcs. 3" Shackle Bolt, 24 pcs. Lock Nut |
| | 7024036000 | 7024086000 | Front/Rear Hanger 29-1/2", Center Hanger 33" | 16 pcs. 18-11.5 Link, 4 pcs. 13-10 Equalizer, 8 pcs. 28-5 Hanger, 24 pcs. 3" Shackle Bolt, 24 pcs. Lock Nut |



DOUBLE EYE SPRINGS

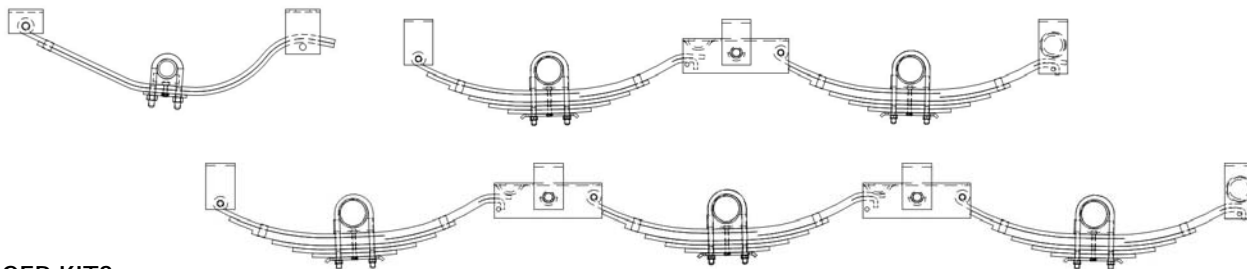
| AXIS P/N | CAPACITY (each) | LENGTH | Description |
|--------------|-----------------|---------|----------------------------|
| 780312620500 | 530 | 26-1/8" | Double Eye 26" 5015-2 |
| 780312620750 | 800 | 26-1/8" | Double Eye 26" 5015-3 |
| 780312020850 | 850 | 20-1/2" | Double Eye 20 1/4" 72-16 |
| 780312021000 | 1000 | 20-1/2" | Double Eye 20" 72-17 |
| 780312621000 | 1060 | 26-1/8" | Double Eye 26" 5015-4 |
| 780312521250 | 1250 | 25-1/4" | Double Eye 25 1/4" 72 - 22 |
| | | | |

↳ Contact Axis Product Service and Sales Department to Order



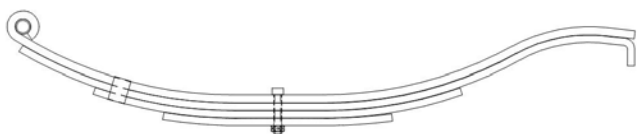
700-2,200 lb. Spring Axles

SLIPPER SPRING AXLE CONFIGURATIONS



HANGER KITS

| CONFIGURATION | AXIS P/N | AXLE SPACING (TYPICAL) | DESCRIPTION (CONTENTS) |
|---------------|------------|----------------------------------------------------------------------------------------------------|----------------------------------------------------------------------------------------------------------------------------------------------------------------------------------------------------------------------------------|
| SINGLE KITS | 7024042000 | 33-1/2" Spacing, 24" Hanger | 4 pcs. 79-160 Hanger, 4 pcs. 3-1/2" Shackle Bolt, 4 pcs. Lock Nut |
| | 7024043000 | 33-1/2" Spacing, 24" Hanger | 2 pcs. 28-1 Hanger, 2 pcs. 30-28 Hanger, 2 pcs. 7-7 Keeper Bolt, 2 pcs. 6-11 Keeper Nut, 2 pcs. 3-1/2" Shackle Bolt, 2 pcs. Lock Nut |
| TANDEM KITS | 7024044000 | 33-1/2" Spacing, 28 7/8" Hanger 36" Spacing, 30 5/8" Hanger | 2 pcs. 29-1 Hanger, 2 pcs. 28-1 Hanger, 2 pcs. 30-28 Hanger, 2 pcs. 13-4 Equalizer, 2 pcs. 7-1 Equalizer Bolt, 2 pcs. 6-3 Nut, 4 pcs. 7-7 Keeper Bolt, 4 pcs. 6-11 Keeper Nut, 4 pcs. 3-1/2" Shackle Bolt, 4 pcs. Lock Nut |
| | 7024045000 | 33-1/2" Spacing, 28 7/8" Hanger 36" Spacing, 30 3/8" Hanger | 2 pcs. 29-1 Hanger, 2 pcs. 28-1 Hanger, 2 pcs. 30-28 Hanger, 2 pcs. 13-44 Long Equalizer, 2 pcs. 7-1 Equalizer Bolt, 2 pcs. 6-3 Nut, 4 pcs. 7-7 Keeper Bolt, 4 pcs. 6-11 Keeper Nut, 4 pcs. 3-1/2" Shackle Bolt, 4 pcs. Lock Nut |
| TRIPLE KITS | 7024046000 | 33-1/2" Spacing, Front/Rear 28-7/8" Center 33" 36" Spacing, Front/Rear 30-3/8" Center 35" | 4 pcs. 29-1 Hanger, 2 pcs. 28-1 Hanger, 2 pcs. 30-28 Hanger, 4 pcs. 13-4 Equalizer, 4 pcs. 7-1 Equalizer Bolt, 4 pcs. 6-3 Nut, 6 pcs. 7-7 Keeper Bolt, 6 pcs. 6-11 Keeper Nut, 6 pcs. 3-1/2" Shackle Bolt, 6 pcs. Lock Nut |
| | 702404700 | 33-1/2" Spacing, Front/Rear 28-7/8" Center 33" 36" Spacing, Front/Rear 30-3/8" Center 35" | 4 pcs. 29-1 Hanger, 2 pcs. 28-1 Hanger, 2 pcs. 30-28 Hanger, 4 pcs. 13-44 Long Equalizer, 4 pcs. 7-1 Equalizer Bolt, 4 pcs. 6-3 Nut, 6 pcs. 7-7 Keeper Bolt, 6 pcs. 6-11 Keeper Nut, 6 pcs. 3-1/2" Shackle Bolt, 6 pcs. Lock Nut |

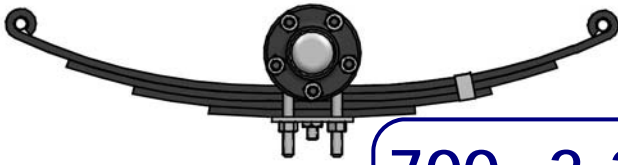


SLIPPER SPRINGS

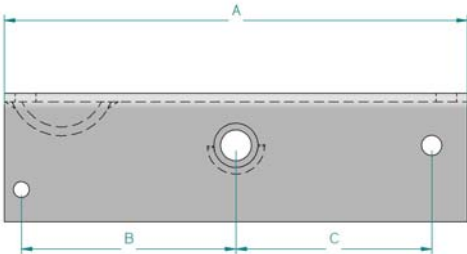
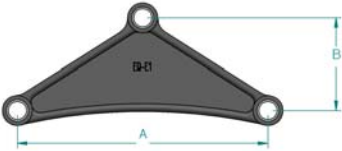
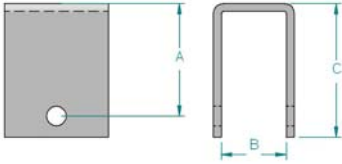
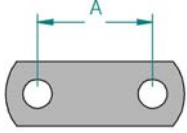
| AXIS P/N | CAPACITY | LENGTH | Description |
|--------------|----------|---------|----------------------------|
| 780313037500 | 750 | 24-1/4" | Slipper Leaf Spring SR-WE3 |
| 780312931000 | 1,000 | 27" | Slipper Leaf Spring 72-2 |
| 780312930700 | 700 | 24-3/4" | Slipper Leaf Spring 72-3 |

↳ Contact Axis Product Service and Sales Department to Order

Quality Driven...
Customer Focused



700-2,200 lb. Spring Axles



SUSPENSION HARDWARE

| AXIS P/N | Description | A | B | C | Double Eye/ Slipper |
|--------------|----------------------------------|---------|---------|---------|------------------------|
| 750362134000 | 13-4 Zinc Plated Equalizer | 11" | 5 1/8" | 5 1/2" | Slipper |
| 750816181100 | 18-11 Zinc Short Shackle Link | 2.00" | | | DE |
| 750816181200 | 18-12 Zinc Long Shackle Link | 3.125" | | | DE |
| 750816811500 | 18-11.5 Zinc Medium Shackle Link | 2.56" | | | DE |
| 770361131000 | 13-10 Cast Equalizer | 6 1/16" | 4" | | DE |
| 770361135300 | 13-104-2 Banana Equalizer | 5 3/4" | 2" | | DE |
| 770361135900 | E1-5 Long Banana Equalizer | 7 3/4" | 2 7/8" | | DE |
| 787815281000 | 28-10 Extra Long Hanger | | | | DE |
| 787815285000 | 28-5 Long Hanger | 3.25" | 1.88" | 3.87" | DE |
| 787815286000 | 28-6 Short Hanger | 1.44" | 1.88" | 2.06" | DE |
| 787815298000 | 29-8 Medium Hanger | 2.00" | 1.88" | 2.63" | DE |
| 787815930010 | 93001 Rear Bushed Hanger | 1.12" | 1.34" | 2.125" | DE |
| 787815930300 | 9303 Rear Hanger | 1.00" | 1.30" | 2.25" | DE |
| 787816181100 | 18-11 Short Shackle Link | 2.00" | | | DE |
| 787816181200 | 18-12 Long Shackle Link | 3.125" | | | DE |
| 787816512500 | 18-13 Extra Long Shackle Link | 3.50" | | | DE |
| 787816811500 | 18-11.5 Medium Shackle Link | 2.56" | | | DE |
| 750711909181 | 9/16-18 x 3" Shackle Bolt Zinc | | | | DE |
| 750711909182 | 9/16-18x3.5" Shackle Bolt Zinc | | | | DE |
| 750721909181 | 9/16-18 FH Nut S-Loc Zinc | | | | DE |
| 78671909181 | Shackle Bolt Lock Nut | | | | DE/Slipper |
| 77071135180 | 7-7 Keeper Bolt | | | | Slipper |
| 750721305180 | 6-11 Keeper Bolt | | | | Slipper |
| 770362134000 | 13-4 Equalizer | 11" | 5 1/8" | 5 1/2" | Slipper |
| 770362134410 | 13-44 Long Equalizer | 13 1/8" | 6 1/16" | 5 9/16" | Slipper |
| 770362135500 | 13-105-2 Cast Equalizer | 6 3/4" | 2 7/8" | | Slipper |
| 770362135600 | EQ-356 Cast Equalizer | 6 1/8" | 2 1/2" | | Slipper |
| 770711214090 | 7-1 Equalizer Bolt | | | | Slipper |
| 770722124090 | 6-3 Equalizer Bolt Nut | | | | Slipper |
| 770815281000 | 28-1 Front Hanger | 4.16" | 2.20" | 4.78" | Slipper |
| 770815291000 | 29-1 Equalizer Hanger | 3.5" | 3.06" | 4.78" | Slipper |
| 770815302800 | 30-28 Rear Hanger | 3.94" | 2.25" | 5.72" | Slipper |
| 786711909182 | 3-1/2" Shackle Bolt | | | | Slipper |

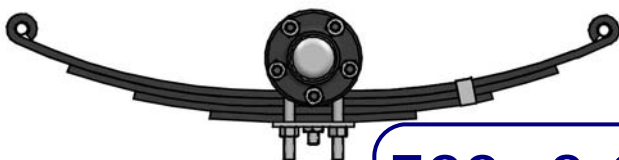
U-Bolts & Tie Plates

| AXIS P/N | Description |
|--------------|---------------------------------------|
| 787814121000 | 12-1 Tie Plate for 1-3/4" Spring |
| 750814121000 | 12-1 Zinc Tie Plate for 1-3/4" Spring |
| 750730008030 | 1/2-20 Zinc U-Bolt Lock Nut |
| 750711108207 | 4-3/8" U-Bolt 1-3/4" Tube 11-41 Zinc |
| 750711108208 | 4-7/8" U-Bolt 1-3/4" 11-42 Zinc |

↳ Contact Axis Product Service and Sales Department to Order

Quality Driven...
Customer Focused





700-2,200 lb. Spring Axles

BRAKES

| AXIS P/N | Description |
|--------------|--------------------------------------|
| 770512307200 | 7" Electric Brake Left Hand |
| 770512407200 | 7" Electric Brake Right Hand |
| 770512307500 | 7" Electric Brake w/ Park Left Hand |
| 770512407500 | 7" Electric Brake w/ Park Right Hand |
| 795513307210 | 7" Hydraulic Brake Left Hand |
| 795513407210 | 7" Hydraulic Brake Right Hand |
| | |

HUBS (All Parts (w/AP) Includes—Bearings, Seal, Dust Cap, Wheel Nuts & Grease)

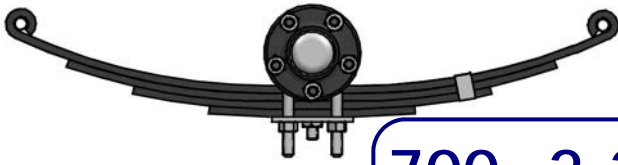
| AXIS P/N w/AP | AXIS P/N Race Only | Bolt Pattern | Description |
|---------------|--------------------|--------------|--------------------------------------|
| 702320500000 | 770412804412 | 4 on 4 | H-100-S |
| 702322200000 | 770412705509 | 5 on 4-1/2 | H-150-S Small Flange |
| 702323500000 | 770412805512 | 5 on 4-1/2 | H-151-S Large Flange |
| 702325200000 | 771412507410 | 4 on 4 | HD-700-A 7" Drum for Hydraulic Brake |
| 702326200000 | 771412505510 | 5 on 4-1/2 | HD-700-C 7" Drum for Hydraulic Brake |
| 702327200000 | 770412207410 | 4 on 4 | HD-DX7-4 7" Drum for Electric Brake |
| 702327800000 | 770412207510 | 5 on 4-1/2 | HD-DX7-5 7" Drum for Electric Brake |
| | | | |

HUB HARDWARE

| AXIS P/N | Description |
|--------------|----------------------------------------------------------------|
| 766251226700 | DL-220 Double Lip Seal |
| 764254446490 | L-44649 1-1/16" Bearing |
| 770413247590 | 2" Press-In Stud for Idler Hubs Only |
| 785452213000 | 21-3 Grease Cap for Use With Plain Spindle |
| 770963130000 | 21-41 Grease Cap for Use With Plain SAF-T-LUB Spindle |
| 770963110000 | 85-1 Rubber Plug for SAFE-T-LUBE Grease Caps |
| 786721408200 | 1/2-20 Cone Wheel Nut |
| 770963120000 | 5-101 Tang Washer for SAF-T-LUB |
| 786930200000 | "O"--Washer for Standard Spindle for Use with Standard Spindle |
| 786722016140 | 1-14 Slotted Jam Nut |
| 786940000000 | 1/8" x 1-3/4" Cotter Pin for Use with Standard Spindle |
| 786930000000 | "D" Washer for Use with SAF-T-LUB Spindle |

↳ Contact Axis Product Service and Sales Department to Order

Quality Driven...
Customer Focused



700–2,200 lb. Spring Axles

WHEEL & TIRE ASSEMBLIES

| AXIS P/N | DESCRIPTION | WHEEL DIA. | TYPE | LOAD RANGE | SLR | PSI | MAX LOAD CAP. (LBS) |
|--------------|-----------------------|------------|-----------|------------|------|-----|---------------------|
| 751060364204 | 4 on 4" White Wheel | Bias | 4.80–8 | B | 7.9 | 60 | 590 |
| 751060552204 | 5 on 4.5" White Wheel | Bias | 4.80–12 | C | 9.5 | 90 | 990 |
| 75106725204 | 4 on 4" White Mods | Bias | 4.80–8 | C | | | |
| 75106725205 | 5 on 4.5" White Mods | Bias | 4.80–8 | C | | | |
| 751050028307 | 4 on 4" White Spoke | Bias | 4.80 x 12 | B | 7.9 | 60 | 780 |
| 751050030307 | 4 on 4" White Spoke | Bias | 4.80 x 12 | C | 9.5 | 90 | 990 |
| 751050031307 | 5 on 4.5" White Spoke | Bias | 5.30 x 12 | B | 10.2 | 55 | 840 |
| 751050034307 | 4 on 4" White Spoke | Bias | 5.30 x 12 | C | 7.9 | 80 | 1045 |
| 751050035307 | 5 on 4.5" White Spoke | Bias | 5.30 x 12 | C | 7.9 | 80 | 1045 |
| | | | | | | | |