

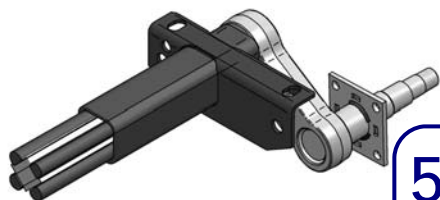


TRAILER PRODUCTS

Torsion Axles

Table of Contents

500-2200 lb. Torsion Axle	2
2700-3700 lb. Torsion Axle	5
4000-6000 lb. Torsion Axle	9
6100-7000 lb. Torsion Axle	13
10,000 lb Torsion Axle	17



500—2,200 lb. Torsion Axles

Typical Industries & Applications include:

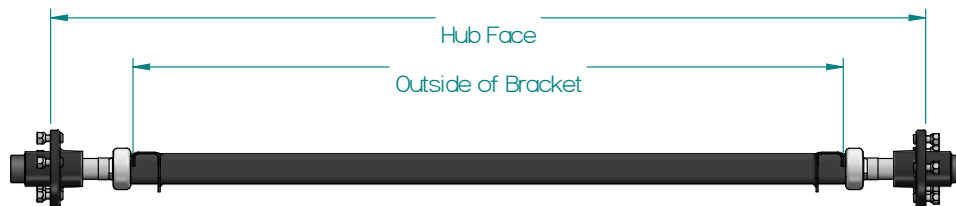
- Enclosed Trailers
 - Cargo
 - Motorcycle cargo
- Open Utility Trailers
 - Landscape
 - Equipment
 - Sport Utility—motorcycle, quad and tri wheel units.
 - Construction
- Marine
 - Boat
 - Personal watercraft
- Specialty Trailers
 - 1/2 Axles
 - Airport Cargo
 - Custom application



Mounting and Dimensions

In order to minimize tire wear and axle performance issues Axis recommends that the following guidelines be followed when specifying axles within the 500 to 2,200 lb. The difference between hub face and outside of bracket dimensions.

Type	Flange	Minimum	Maximum
Straight Spindle	No Brake Flange	13"	21.750"
Straight Spindle	Flanged	13"	21.750"



OPTIONS:



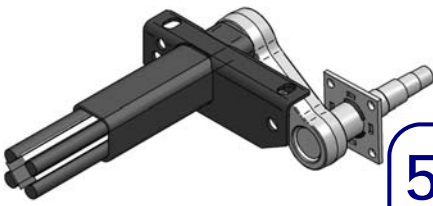
Drop Center Camber



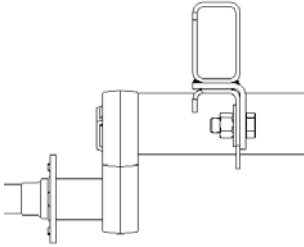
Standard Camber

Available Finishes include:

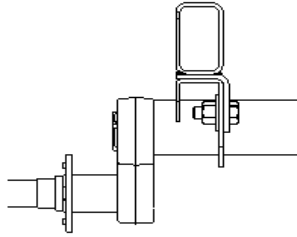
- Powder Coating
- Galvanized
- Wet Paint



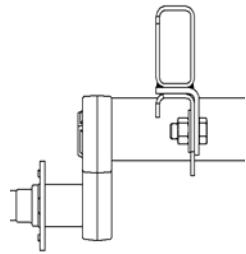
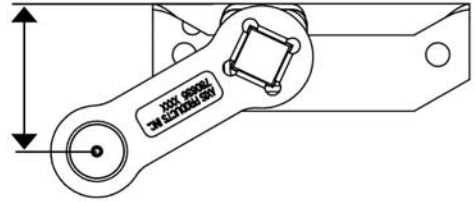
500—2,200 lb. Torsion Axles



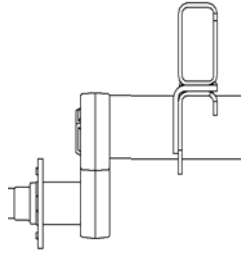
Low-Profile (Standard)



High-Profile
(1" higher than Standard)



Inboard Mount



Outboard Mount

TORSION DYNAMIC DATA

(from bracket top to center of spindle)

Start Angle	Bracket Type	No Load	Full Load	Shock Load
45 Degree Down	Standard	5.46	3.52	2.52
	Hi-Profile	6.33	4.38	3.38
22.5 Degree Down	Standard	3.52	1.22	0.18
	Hi-Profile	4.38	2.09	1.04
10 Degree Down	Standard	2.26	-0.08	-1.08
	Hi-Profile	3.13	0.79	-0.21
0 Degree	Standard	1.22	-1.08	-2.00
	Hi-Profile	2.09	-0.21	-1.14
10 Degree Up	Standard	0.18	-2.00	-2.83
	Hi-Profile	1.04	-1.14	-1.97
22.5 Degree Up	Standard	-1.08	-3.02	-3.70
	Hi-Profile	-0.21	-2.16	-2.83

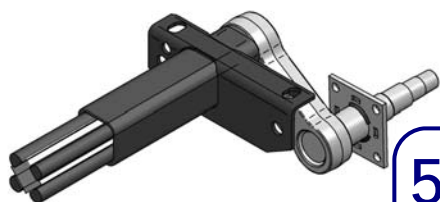
HUBS (All Parts (w/AP) Includes—Bearings, Seal, Dust Cap, Wheel Nuts & Grease)

AXIS P/N w/AP	AXIS P/N Race Only	Bolt Pattern	Description
70232050000	770412804412	4 on 4	H-100-S
70232220000	770412705509	5 on 4-1/2	H-150-S Small Flange
70232350000	770412805512	5 on 4-1/2	H-151-S Large Flange
70232520000	771412507410	4 on 4	HD-700-A 7" Drum for Hydraulic Brake
70232620000	771412505510	5 on 4-1/2	HD-700-C 7" Drum for Hydraulic Brake
70232720000	770412207410	4 on 4	HD-DX7-4 7" Drum for Electric Brake
70232780000	770412207510	5 on 4-1/2	HD-DX7-5 7" Drum for Electric Brake

Contact Axis Product Service and Sales Department to Order

Quality Driven...
Customer Focused





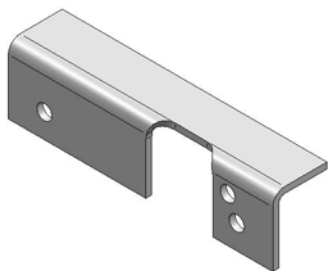
500-2,200 lb. Torsion Axles

BRAKES

AXIS P/N	Description
770512307200	7" Electric Brake Left Hand
770512407200	7" Electric Brake Right Hand
770512307500	7" Electric Brake w/ Park Left Hand
770512407500	7" Electric Brake w/ Park Right Hand
795513307210	7" Hydraulic Brake Left Hand
795513407210	7" Hydraulic Brake Right Hand

HUB HARDWARE

AXIS P/N	Description
766251467590	DL-200 Double-Lip Seal for 1" Spindle
766251226700	DL-220 Double-Lip Seal for 1-1/16" Spindle
764254446490	L-44649 Bearing for 1-1/16" Spindle
764254446430	L-44643 Bearing for 1" Spindle
770413247600	Press in Stud for Idler Hub / 1/2"-20
770991100000	Screw-in Stud / 1/2"-20
785452213000	21-3 Grease Cap for Plain Spindle
770963130000	21-41 Grease Cap for Saf-T-Lube Spindle
786721408200	1/2"-20 Cone Wheel Nut
770963110000	85-1 Rubber Plug for Saf-T-Lube Grease Cap
770963120000	5-101 Tang Washer for SAF-T-LUB
786930200000	"O"--Washer for Standard Spindle for Use with Standard Spindle
786722016140	1-14 Slotted Jam Nut
786940000000	1/8" x 1-3/4" Cotter Pin for Use with Standard Spindle
786930000000	"D" Washer for Use with SAF-T-LUB Spindle



Left Hand Side Mount Hanger

SIDE HANGER KITS

AXIS P/N	Description
787855091000	# 22 Left Hand Hanger (1)
787855092000	# 22 Right Hand Hanger (1)
750711910160	5/8-18 x 1.5" Bolt (4)
750721912181	5/8-18 Lock Nut (4)
750730035800	5/8-Flat Washer (4)

WHEEL & TIRE ASSEMBLIES

AXIS P/N	DESCRIPTION	WHEEL DIA.	TYPE	LOAD RANGE	SLR	PSI	MAX LOAD CAP. (LBS)
751060364204	4 on 4" White Wheel	4.80-8	Bias	B	7.9	60	590
751060552204	5 on 4.5" White Wheel	5.70-8	Bias	B	8.7	50	715
75106725204	4 on 4" White Mods	4.80-8	Bias	B	7.9	60	590
75106725205	5 on 4.5" White Mods	4.80-8	Bias	B	7.9	60	590
751050028307	4 on 4" White Spoke	4.80 x 12	Bias	B	9.5	60	780
751050030307	4 on 4" White Spoke	4.80 x 12	Bias	C	9.5	90	990
751050031307	5 on 4.5" White Spoke	4.80 x 12	Bias	C	9.5	90	990
751050034307	4 on 4" White Spoke	5.30 x 12	Bias	B	10.2	55	840
751050035307	5 on 4.5" White Spoke	5.30 x 12	Bias	C	10.2	80	1045

Contact Axis Product Service and Sales Department to Order



Quality Driven...
Customer Focused



2,700–3,700 lb. Torsion Axles

Typical Industries & Applications include:

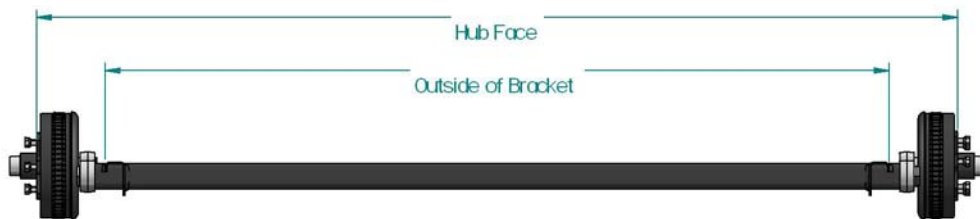
- Recreational Vehicle Trailers
- Enclosed Trailers
 - Cargo
 - Vehicle
 - Race Vehicle
- Open Utility Trailers
 - Landscape
 - Equipment
 - Sport Utility—motorcycle, quad and tri wheel units.
 - Construction
 - Construction Equipment
- Dump Trailer
- Marine
 - Boat
 - Personal watercraft
 - Pontoon Boat
- Agricultural Equipment
 - Feed & Grain
 - Spreaders
 - Transport
- Specialty Trailer
 - 1/2 Axles
 - Custom Application



Mounting and Dimensions

In order to minimize tire wear and axle performance issues Axis recommends that the following guidelines be followed when specifying axles within the 2,700 to 3,700 lb. The difference between hub face and outside of bracket dimensions.

Type	Flange	Minimum	Maximum
Straight Spindle	No Brake Flange	13"	23.625"
Straight Spindle	Flanged	13"	23.625"



OPTIONS:



Drop Center Camber



Standard Camber

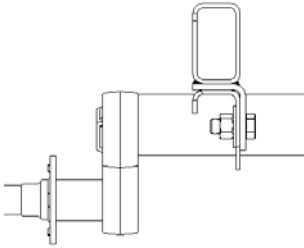
Available Finishes include:

- Powder Coating
- Galvanized
- Wet Paint

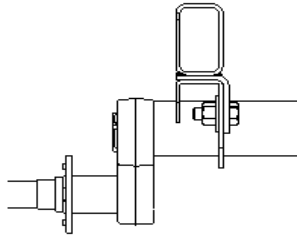


2,700–3,700 lb. Torsion Axles

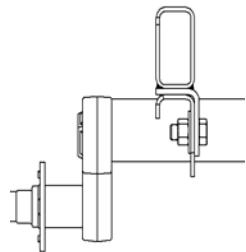
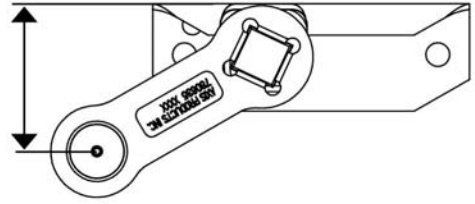
2,700–3,700 TA



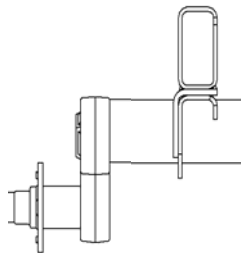
Low-Profile (Standard)



High-Profile
(1" higher than Standard)



Inboard Mount



Outboard Mount

TORSION DYNAMIC DATA

(from bracket top to center of spindle)

Start Angle	Bracket Type	No Load	Full Load	Shock Load
45 Degree Down	Standard	6.01	4.06	3.06
	Hi-Profile	6.76	4.81	3.81
22.5 Degree Down	Standard	4.06	1.77	0.72
	Hi-Profile	4.81	2.52	1.47
10 Degree Down	Standard	2.81	0.47	-0.53
	Hi-Profile	3.56	1.22	0.22
0 Degree	Standard	1.77	-0.53	-1.46
	Hi-Profile	2.52	0.22	-0.71
10 Degree Up	Standard	0.72	-1.46	-2.29
	Hi-Profile	1.47	-0.71	-1.54
22.5 Degree Up	Standard	-0.53	-2.48	-3.15
	Hi-Profile	0.22	-1.73	-2.40

HUBS (All Parts (w/AP) Includes—Bearings, Seal, Dust Cap, Wheel Nuts & Grease)

AXIS P/N w/AP	Description	AXIS P/N w/AP	Description	AXIS P/N Race Only	Bolt Pattern
702331100000	H-545 Hub for Plain Spindle	702331200000	H-545 Hub for SAF-T-LUB Spindle	770412705510	5 on 4.5"
702332100000	H-5475 Hub for Plain Spindle	702332110000	H-5475 Hub for SAF-T-LUB Spindle	770412705512	5 on 4.75"
702332400000	H-550 Hub for Plain Spindle	702332410000	H-550 Hub for SAF-T-LUB Spindle	770412705511	5 on 5.0"
702332700000	H-555 Hub for Plain Spindle	702332710000	H-555 Hub for SAF-T-LUB Spindle	770412705513	5 on 5.5"
702333000000	H-655 Hub for Plain Spindle	702333100000	H-655 Hub for SAF-T-LUB Spindle	770412710610	6 on 5.5"
702336100000	HD-545 for Plain Spindle	702336200000	HD-545 for SAF-T-LUB Spindle	770412110510	5 on 4.5"
702337100000	HD-5475 for Plain Spindle	702337200000	HD-5475 for SAF-T-LUB Spindle	770412110512	5 on 4.75"
702337400000	HD-550 for Plain Spindle			770412110511	5 on 5.50"
702337700000	HD-555 for Plain Spindle			770412110513	5 on 5.50"
702337700000	HD-655 for Plain Spindle			770412110513	6 on 5.50"
702338600000	HD-700B for Plain Spindle (Hydraulic Only)			770412507510	5 on 4.5"

Contact Axis Product Service and Sales Department to Order



Quality Driven...
Customer Focused



2,700–3,700 lb. Torsion Axles

2,700–3,700 TA

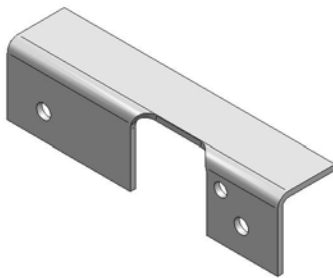
• Axis Trailer Products, LLC. • Elkhart, IN. • Phone 574.264.7955 • axistrailerproducts.com

BRAKES

AXIS P/N	Description
770512310300	10" Electric Brake Left Hand
770512410300	10" Electric Brake Right Hand
770512310320	10" Electric Brake w/Park Left Hand
770512410320	10" Electric Brake w/Park Right Hand
776513310300	10" Hydraulic Brake Left Hand
776513410300	10" Hydraulic Brake Right Hand
796513310320	10" Hydraulic Brake Free Backing Left Hand
796513410320	10" Hydraulic Brake Free Backing Right Hand
796513310360	10" Hydraulic Brake Free Backing w/Park Left Hand
796513410360	10" Hydraulic Brake Free Backing w/Park Right Hand
795513307210	7" DX Hydraulic Brake Left Hand
795513407210	7" DX Hydraulic Brake Right Hand
702338054500	10" Disc Brake w/ All Parts

HUB HARDWARE

AXIS P/N	Description
766251254800	DL-350 Double Lip Seal
764254446490	L44649 Outer Tapered Roller Bearing
770963120000	5-101 Tang Washer for SAF-T-LUB
786930200000	"O"--Washer for Standard Spindle for Use with Standard Spindle
786722016140	1-14 Slotted Jam Nut
786940000000	1/8" x 1-3/4" Cotter Pin for Use with Standard Spindle
786721408200	1/2" - 20 Cone Wheel Nut
770963130000	21-41-01 Grease Cap for Use with SAF-T-LUB Spindle
770963110000	85-1 Rubber Plug for SAF-T-LUB Grease Cap
770413247700	2" Press-In Stud for Idler Hubs
770413247800	2 1/2" Press-In Stud for Idler Hubs & Brake Drums
785452213000	Grease Cap 21-3 for Use with Standard Spindle
786930000000	"D" Washer for Use with SAF-T-LUB Spindle
764254681490	L68149 Inner Tapered Roller Bearing



Left Hand Side Mount Hanger

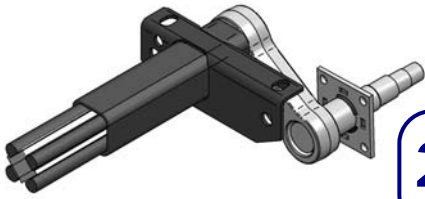
SIDE HANGER KIT

AXIS P/N	Description
787855101000	#35 Side Hanger Left Hand (1)
787855102000	#35 Side Hanger Right Hand (1)
750711910160	5/8" - 18 x 1.5" Bolt Zinc (4)
780721912181	5/8" - 18 Nut Zinc (4)
750730035800	5/8" Washer (4)

Contact Axis Product Service and Sales Department to Order



Quality Driven...
Customer Focused



2,700–3,700 lb. Torsion Axles

2,700–3,700 TA

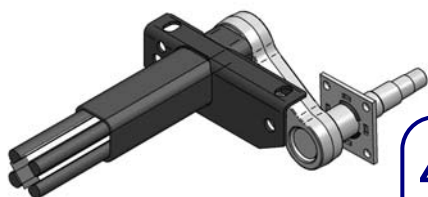
WHEEL & TIRE ASSEMBLIES

AXIS P/N	DESCRIPTION	WHEEL DIA.	TYPE	LOAD RANGE	SLR	PSI	MAX LOAD CAP. (LBS)
751050440644	ST175/80 D13 5 on 4.5"	13"	Bias	C	11.2	50	1360
751050470007	ST205/75 R14 5 on 4.5"	14"	Radial	C	12.1	50	1760
751050453620	ST215/75–14 5 on 4.5"	14"		C	12.4	50	1870
751050473007	ST205/75 R15 5 on 4.5"	15"	Radial	C	12.6	50	1820
751050474007	ST225/75 R15 5 on 4.5"	15"	Radial	C	13	50	2150

Axis Trailer Products, LLC. • Elkhart, IN. • Phone 574.264.7955 • axistrailerproducts.com



Quality Driven...
Customer Focused



4,000–6,000 lb. Torsion Axles

Typical Industries & Applications include:

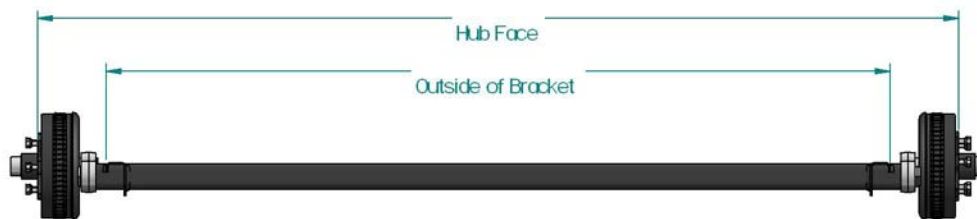
- Recreational Vehicle Trailers
- Enclosed Trailers
 - Cargo
 - Vehicle
 - Race Vehicle (Stacker)
- Open Utility Trailers
 - Landscape
 - Equipment
 - Construction
 - Construction Equipment
- Dump Trailers
- Marine
 - Boat
 - Personal watercraft
 - Pontoon Boat
- Agricultural Equipment
 - Feed & Grain
 - Spreaders
 - Transport
- Specialty Trailer
 - 1/2 Axles
 - Custom Application



Mounting and Dimensions

In order to minimize tire wear and axle performance issues Axis recommends that the following guidelines be followed when specifying axles within the 4,000 to 6,000 lb. The difference between hub face and outside of bracket dimensions.

Type	Flange	Minimum	Maximum
Straight Spindle	No Brake Flange	15"	23.625"
Straight Spindle	Flanged	15"	23.625"



OPTIONS:



Drop Center Camber



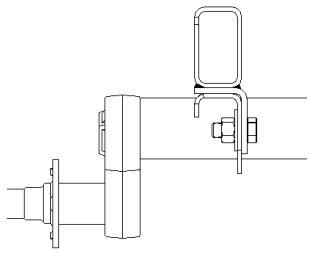
Standard Camber

Available Finishes include:

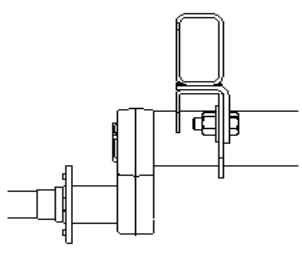
- Powder Coating
- Galvanized
- Wet Paint



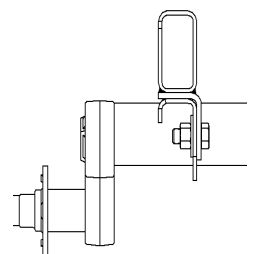
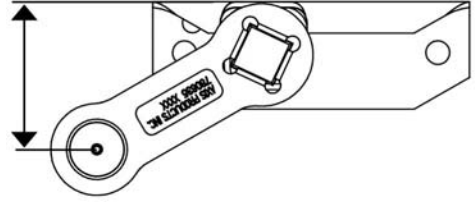
4,000–6,000 lb. Torsion Axles



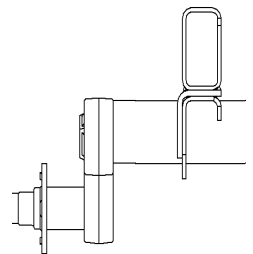
Low-Profile (Standard)



High-Profile
(1" higher than Standard)



Inboard Mount



Outboard Mount

TORSION DYNAMIC DATA

(from bracket top to center of spindle)

Start Angle	Bracket Type	No Load	Full Load	Shock Load
45 Degree Down	Standard	6.01	4.06	3.06
	Hi-Profile	6.76	4.81	3.81
22.5 Degree Down	Standard	4.06	1.77	0.72
	Hi-Profile	4.81	2.52	1.47
10 Degree Down	Standard	2.81	0.47	-0.53
	Hi-Profile	3.56	1.22	0.22
0 Degree	Standard	1.77	-0.53	-1.46
	Hi-Profile	2.52	0.22	-0.71
10 Degree Up	Standard	0.72	-1.46	-2.29
	Hi-Profile	1.47	-0.71	-1.54
22.5 Degree Up	Standard	-0.53	-2.48	-3.15
	Hi-Profile	0.22	-1.73	-2.40

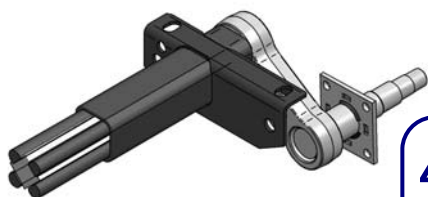
HUBS (All Parts (w/AP) Includes—Bearings, Seal, Dust Cap, Wheel Nuts & Grease)

AXIS P/N w/AP	AXIS P/N Race Only	Description	Bolt Pattern
702361110000	770412712610	H-1206 Hub for SAF-T-LUB Spindle	6 on 5.5"
702366100000	770412112610	HD-1206 Drum for Plain Spindle	6 on 5.5"
702366200000	770412112610	HD-1206 Drum for SAF-T-LUB Spindle	6 on 5.5"
702362100000	770412712810	H-1208 Hub for Plain Spindle	8 on 6.5"
702362200000	770412712810	H-1208 Hub for SAF-T-LUB Spindle	8 on 6.5"
	770412719160	H-1208 Hub w/ 9/16" Studs	8 on 6.5"
702367100000	770412112810	HD-1208 Drum for Plain Spindle	8 on 6.5"
702367200000	770412112810	HD-1208 Drum for SAF-T-LUB Spindle	8 on 6.5"
	770412119160	HD-1208 Drum w/9/16" Studs	8 on 6.5"
770412212510	770412212500	HD-HCS Drum Demountable	8 on 6.5"

Contact Axis Product Service and Sales Department to Order

Quality Driven...
Customer Focused





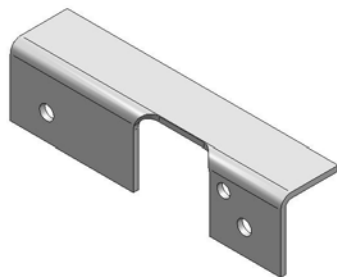
4,000–6,000 lb. Torsion Axles

BRAKES

AXIS P/N	Description
770512312200	12" Electric Brake Left Hand
770512412200	12" Electric Brake Right Hand
770512312220	12" Electric Brake Left Hand w/ Park
770512412220	12" Electric Brake Right Hand w/ Park
796514312200	12" Hydraulic Brake Left Hand
796514412200	12" Hydraulic Brake Right Hand
796514312212	12" Hydraulic Brake Left Hand Fee-Backing
796514412212	12" Hydraulic Brake Right Hand Free-Backing
796514312214	12" Hydraulic Brake Left Hand Fee-Backing w/ Park
796514412214	12" Hydraulic Brake Right Hand Fee-Backing w/ Park
702366500000	12" Disc Brake w/ All Parts
702366510000	13" Disc Brake w/ All Parts

HUB HARDWARE

AXIS P/N	Description
770413247800	1/2-20 2.5" Press-in Stud
770413247590	1/2-20 2.0" Press-in Stud
770963140000	21-42-01 Grease Cap for Use with H-1206 or HD-1206 SAF-T-LUB Spindle
770963150000	21-43-01 Grease Cap for Use with H-1208 or HD-1208 SAF-T-LUB Spindle
770963110000	85-1 Rubber Plug for SAF-T-LUB Grease Cap
785452211000	21-1 Grease Cap for Use with H-1206 or HD-1206 Plain Spindle
778452921100	21-39 Grease Cap for Use with H-1208 or HD-1208 Plain Spindle
766251101500	DL-600 Double Lip Seal for 2-1/8" Spindle Shaft
766251701036	DL-700 Double Lip Seal for 2-1/4" Spindle Shaft
770963120000	5-101 Tang Washer for SAF-T-LUB
786722016140	1-14 Slotted Jam Nut
786930000000	"D" Washer for SAF-T-LUB Spindle
786930200000	"O" Washer for Standard Spindle
786940000000	1/8 X 1-3/4 Cotter Pin
764254255800	25580 Inner Tapered Roller Bearing
764254151230	15123 Outer Tapered Roller Bearing use with 1206 & HCS
764254141250	14125A Outer Tapered Roller Bearing



Left Hand Side Mount Hanger

SIDE HANGER KITS

AXIS P/N	Description
787855111000	#52-Left Hand Side Mount Hanger (1)
787855112000	#52-Right Hand Side Mount Hanger (1)
750711910160	5/8-18x1.5" HCS G5 Bolt-Zinc (4)
750721912181	5/8-18 FHN T-LOC Nut Zinc (4)
750730035800	5/8 Flat Washer - Zinc (4)

Contact Axis Product Service and Sales Department to Order



Quality Driven...
Customer Focused



4,000–6,000 lb. Torsion Axles

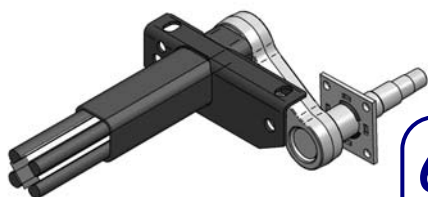
WHEEL & TIRE ASSEMBLIES

AXIS P/N	DESCRIPTION	WHEEL DIA.	TYPE	LOAD RANGE	SLR	PSI	MAX LOAD CAP. (LBS)
751050431607	LT235/85 R-16 8 on 6.5" White Spoke	16"	Radial	E	14.3"	80	3042
751050456750	LT225/75 R-15 6 on 5.5" White Mod	15"	Radial	D	13.5"	65	2335
751050495001	LT225-75 R-15 6 on 5.5" White Spoke	15"	Radial	D	13.5"	65	2335
751050495004	ST205/75 R-15 6 on 5.5" White Spoke	15"	Radial	C	12.6"	50	1820
751060244220	9.00-14.5 LT F T700	14.5"	Bias	F	13.3"	100	3230

↳ Contact Axis Product Service and Sales Department to Order



Quality Driven...
Customer Focused



6,100–7,000 lb. Torsion Axles

Typical Industries & Applications include:

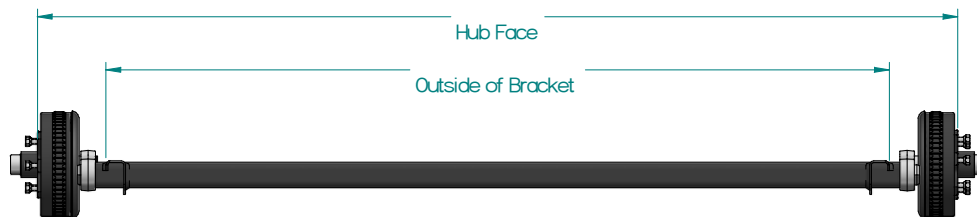
- Recreational Vehicle Trailers
- Enclosed Trailers
 - Cargo
 - Vehicle
 - Race Vehicle (Stacker)
- Open Utility Trailers
 - Landscape
 - Equipment
 - Construction
 - Construction Equipment
- Dump Trailers
- Marine
 - Boat
 - Personal watercraft
 - Pontoon Boat
- Agricultural Equipment
 - Feed & Grain
 - Spreaders
 - Transport
- Specialty Trailer
 - 1/2 Axles
 - Custom Application



Mounting and Dimensions

In order to minimize tire wear and axle performance issues Axis recommends that the following guidelines be followed when specifying axles within the 6,100 to 7,000 lb. The difference between hub face and outside of bracket dimensions.

Type	Flange	Minimum	Maximum
Straight Spindle	No Brake Flange	15"	30.625"
Straight Spindle	Flanged	15"	30.625"



OPTIONS:



Drop Center Camber



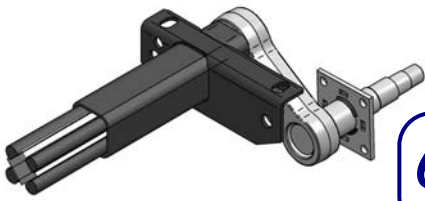
Standard Camber

Available Finishes include:

- Powder Coating
- Galvanized
- Wet Paint



Quality Driven...
Customer Focused

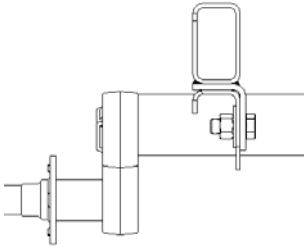


6,100–7,000 lb. Torsion Axles

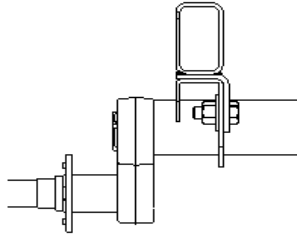
axistrailerproducts.com

6,100–7,000 TA

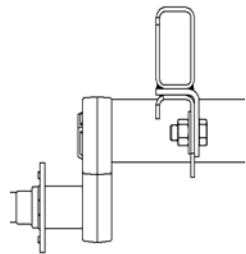
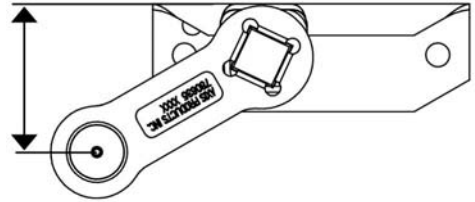
Axis Trailer Products, LLC • Elkhart, IN. • Phone 574.264.7955



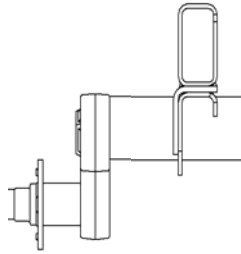
Low-Profile (Standard)



High-Profile
(1" higher than Standard)



Inboard Mount



Outboard Mount

TORSION DYNAMIC DATA

(from bracket top to center of spindle)

Start Angle	Bracket Type	No Load	Full Load	Shock Load
45 Degree Down	Standard	6.24	4.30	3.30
	Hi-Profile	6.99	5.05	4.05
22.5 Degree Down	Standard	4.30	2.00	0.96
	Hi-Profile	5.05	2.75	1.71
10 Degree Down	Standard	3.04	0.70	-0.30
	Hi-Profile	3.79	1.45	0.45
0 Degree	Standard	2.00	-0.30	-1.22
	Hi-Profile	2.75	0.45	-0.47
10 Degree Up	Standard	0.96	-1.22	-2.05
	Hi-Profile	1.71	-0.47	-1.30
22.5 Degree Up	Standard	-0.30	-2.24	-2.91
	Hi-Profile	0.45	-1.49	-2.16

HUBS (All Parts (w/AP) Includes—Bearings, Seal, Dust Cap, Wheel Nuts & Grease)

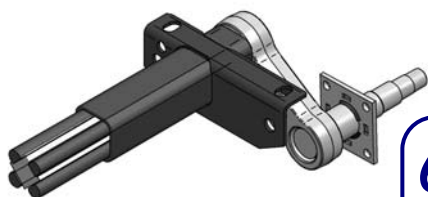
AXIS P/N w/AP	AXIS P/N Race Only	Bolt Pattern	Description
702361100000	770412712610	6 on 5-1/2"	H-1206 Hub for Plain Spindle
702361110000	770412712610	6 on 5-1/2"	H-1206 Hub for SAFE-T-LUBE Spindle
702362100000	770412712810	8 on 6-1/2"	H-1208 Hub for Plain Spindle
702362200000	770412712810	8 on 6-1/2"	H-1208 Hub for SAFE-T-LUBE Spindle
702366100000	770412712610	6 on 5-1/2"	HD-1206 Drum for Plain Spindle
702366200000	770412112610	6 on 5-1/2"	HD-1206 Drum for SAFE-T-LUBE Spindle
702367100000	77041211810	8 on 6-1/2"	HD-1208 Drum for Plain Spindle
702367220000	770412112810	8 on 6-1/2"	HD-1208 Drum for SAFE-T-LUBE Spindle
702366510000	770412908653	8 on 6-1/2"	13" Integral Hub & Rotor for Disc Brake

Contact Axis Product Service and Sales Department to Order



Quality Driven...
Customer Focused

Order Forms can be found at <https://axistrailerproducts.com/axles/>



6,100–7,000 lb. Torsion Axles

BRAKES

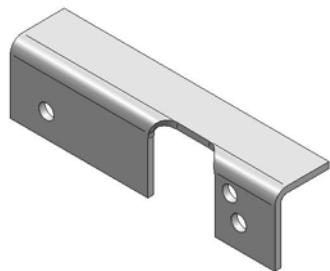
AXIS P/N	Description
796514312200	12" Hydraulic Brake Left Hand
796514412200	12" Hydraulic Brake Right Hand
796514312210	12" Hydraulic Brake w/ Park Left Hand
796514412210	12" Hydraulic Brake w/ Park Right Hand
796514312212	12" Hydraulic Brake/ Free Backing Left Hand
796514412212	12" Hydraulic Brake/ Free Backing Right Hand
770512312200	12" Electric Brake Left Hand
770512412200	12" Electric Brake Right Hand
796713410700	13" E-Coated Disc Brake Set (includes all attaching components)
796713410075	13" SCAD Disc Brake Set (includes all attaching components)

HUB HARDWARE

AXIS P/N	Description
766251101500	DL-600 Double Lip Seal for 2-1/8" Spindle Shaft
766251701036	DL-700 Double Lip Seal for 2-1/4" Spindle Shaft
764254141250	14125A Outer Taper Roller Bearing for 1-1/4" Spindle
764254255800	25580 Inner Taper Roller Bearing for 1-1/4" Spindle
770413247590	2" Press-In Stud for Idler Hubs Only
770413247800	2-1/2" Press-In Stud for Idler Hubs & Brake Drums
785452211000	21-1 Grease Cap—Fits 6 Lug Hub/Drum for Use With Plain Spindle
785452213900	21-39 Grease Cap—Fits 8 Lug Hub/Drum for Use With Plain Spindle
770963140000	21-42-01 Grease Cap—Fits 6 Lug Hub/Drum for Use with SAFE-T-LUBE Spindles
770963150000	21-43-01 Grease Cap—Fits 8 Lug Hub/Drum for Use with SAFE-T-LUBE Spindles
770963110000	85-1 Rubber Plug for SAFE-T-LUBE Grease Caps
786721408200	1/2-20 Cone Wheel Nut
770413247700	Press-In Stud for 12" Rotor
770413247750	Press-In Stud for 13" Rotor
770963120000	5-101 Tang Washer for SAF-T-LUB
786930200000	"O"--Washer for Standard Spindle for Use with Standard Spindle
786722016140	1-14 Slotted Jam Nut
786940000000	1/8" x 1-3/4" Cotter Pin for Use with Standard Spindle
786930000000	"D" Washer for Use with SAF-T-LUB Spindle

SIDE HANGER KITS

AXIS P/N	Description
787855121000	#70 Left Hand Side Mount Hanger (1)
787855122000	#70 Right Hand Side Mount Hanger (1)
750711910160	5/8"—18 x 1.5 HCS Zinc Bolt (4)
750721912181	5/8"—18 FH Zinc T-Lock Nut (4)
750730035800	5/8" Zinc Flat Washer (4)

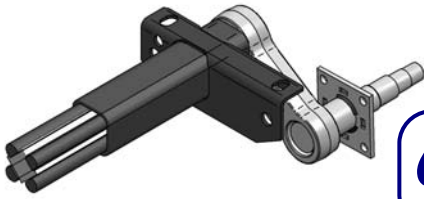


Left Hand Side Mount Hanger

↳ Contact Axis Product Service and Sales Department to Order



Quality Driven...
Customer Focused



6,100–7,000 lb. Torsion Axles

• axistrailerproducts.com

WHEEL & TIRE ASSEMBLIES

AXIS P/N	DESCRIPTION	WHEEL DIA.	TYPE	LOAD RANGE	SLR	PSI	MAX LOAD CAP. (LBS)
751050420000	ST235/85 R16 6 on 5.5 White Spoke	16"	Radial	E	14.3"	90	3042
751050431607	ST235/85 R16 8 on 6.5 White Spoke	16"	Radial	E	14.3"	90	3042
751050431608	ST235/80 R16 8 on 6.5 White Spoke	16"	Radial	D	14.0"	65	3000
751050431609	ST235/80 R16 8 on 6.5 Silver Mod	16"	Radial	D	14.0"	65	3000
751050431610	LT235/85 R16 8 on 6.5 White Spoke	16"	Radial	D	14.3"	65	2623
751050431620	LT235/85 R16 8 on 6.5 Silver Mod	16"	Radial	D	14.3"	65	2623
751050431630	LT235/85 R16 8 on 6.5 White Mod	16"	Radial	D	14.3"	65	2623

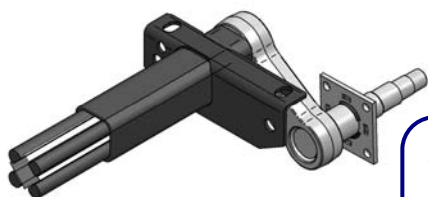
6,100–7,000 TA

Axis Trailer Products, LLC • Elkhart, IN. • Phone 574.264.7955

↳ Contact Axis Product Service and Sales Department to Order



Quality Driven...
Customer Focused



10,000 lb. General Duty Torsion Axles

Typical Industries & Applications include:

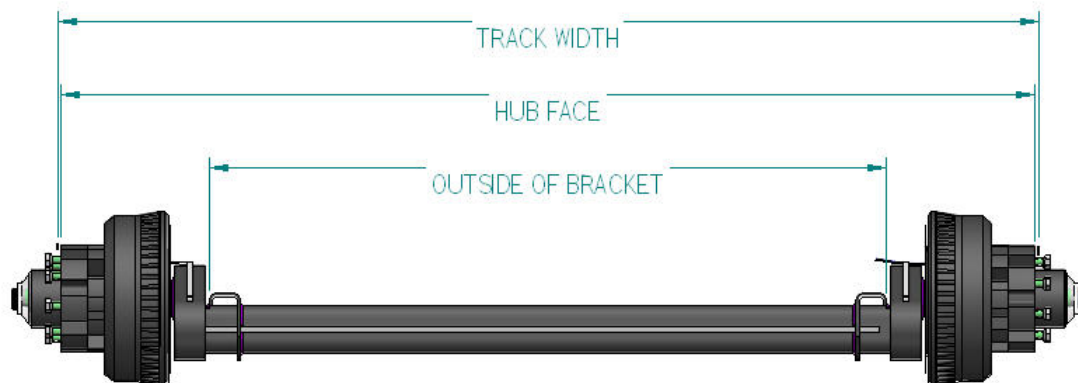
- Recreational Vehicle Trailers
- Enclosed Trailers
 - Cargo
 - Vehicle
 - Race Vehicle (Stacker)
- Open Utility Trailers
 - Landscape
 - Equipment
 - Construction
 - Construction Equipment
- Dump Trailers
- Marine
 - Boat
 - Personal watercraft
 - Pontoon Boat
- Agricultural Equipment
 - Feed & Grain
 - Spreaders
 - Transport
- Specialty Trailer
 - Custom Application



Mounting and Dimensions

In order to minimize tire wear and axle performance issues Axis recommends that the following guidelines be followed when specifying axles at 10,000 lb. The difference between hub face and outside of bracket dimensions.

Type	Flange	Minimum	Maximum
Straight Spindle	Flanged	22.7"	34.4"



OPTIONS:

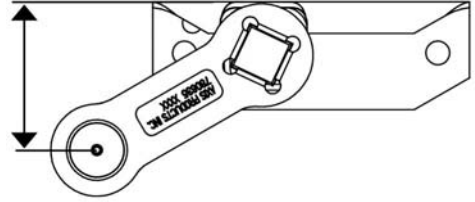
- Available Finishes include:
- Powder Coating
 - Galvanized
 - Wet Paint

**Quality Driven...
Customer Focused**

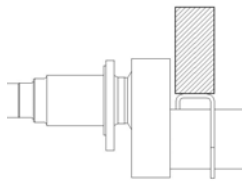


10,000 lb. General Duty Torsion Axles

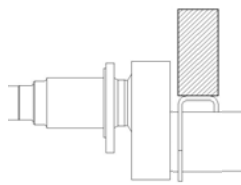
• axistrailerproducts.com



10,000 GD TA



Inboard Mount



Outboard Mount

TORSION DYNAMIC DATA

(from bracket top to center of spindle)

Start Angle	Bracket Type	No Load	Full Load	Shock Load
45 Degree Down	Standard	7.18	5.24	4.24
22.5 Degree Down	Standard	5.24	2.94	1.90
10 Degree Down	Standard	3.98	1.64	0.64
0 Degree	Standard	2.94	0.64	-0.28
10 Degree Up	Standard	1.90	-0.28	-1.11
22.5 Degree Up	Standard	0.64	-1.30	-1.97

Axis Trailer Products, LLC • Elkhart, IN. • Phone 574.264.7955

HUBS (All Parts (w/AP) Includes—Bearings, Seal, Dust Cap, Wheel Nuts & Grease)

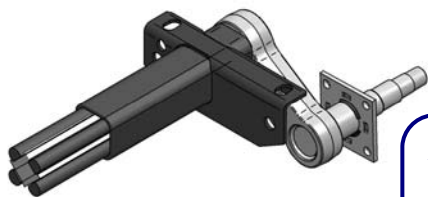
AXIS P/N w/AP	AXIS P/N Race Only	Bolt Pattern	Description
	770450004000	8 on 6.5"	10K GD Hub/Drum Complete Cupped & Studded, 5/8-18" Studs w/ Mounting Screws

Contact Axis Product Service and Sales Department to Order



Quality Driven...
Customer Focused

Order Forms can be found at <https://axistrailerproducts.com/axes/>



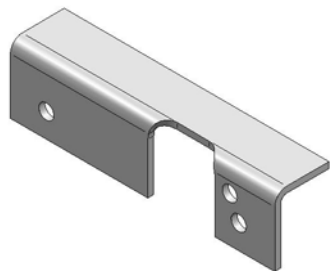
10,000 lb. General Duty Torsion Axles

BRAKES

AXIS P/N	Description
770512601000	12 1/4" x 3 3/8" LH Electric Brake
770512602000	12 1/4" x 3 3/8" RH Electric Brake

HUB HARDWARE

AXIS P/N	Description
786930810000	Spindle Washer for 9/10K Hub/Drum
786930830000	1 1/2-12 Spindle Nut for 9/10K Hub/Drum
786930820000	Tang Washer for 9/10K Hub/Drum
764250438700	BEARING 387A
764254255800	BEARING 25580
766252010051	OIL SEAL 9/10K GD HUB/DRUM
750734300000	7/16" Loc Washer Zinc
750721807200	7/16-20 FH NUT ZINC
750734100000	7/16-20 x 1.5" HCS G5 Bolt
766252010050	O-Ring for 9/10K Oil Hub/Drum
750730008150	5/8-18 Cone Wheel Nut
	10k Oil Bath Cap - with Air-Tight
	AIR TIGHT CAP



Left Hand Side Mount Hanger

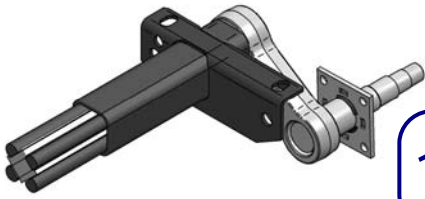
SIDE HANGER KITS

AXIS P/N	Description

↳ Contact Axis Product Service and Sales Department to Order

**Quality Driven...
Customer Focused**





10,000 lb. General Duty Torsion Axles

• axistrailerproducts.com

WHEEL & TIRE ASSEMBLIES

AXIS P/N	DESCRIPTION	WHEEL DIA.	TYPE	LOAD RANGE	SLR	PSI	MAX LOAD CAP. (LBS)

10,000 GD TA

Axis Trailer Products, LLC • Elkhart, IN. • Phone 574.264.7955

↳ Contact Axis Product Service and Sales Department to Order



**Quality Driven...
Customer Focused**